



EMPOWERING COLLABORATION IN PUBLIC SECTOR

Wanida Nilprapai
B2B Senior Account Manager
Logitech Thailand
+6697 936 2451
wnilprapai@logitech.com



INTRODUCTION





**1981, Logitech was founded in
Switzerland**



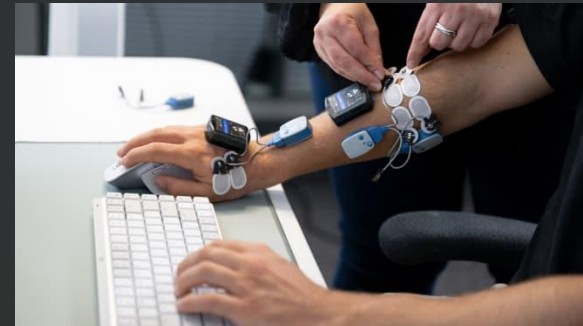
**1982, Set up R & D center in
Silicon Valley, USA**



**1994, Set up global factory in
Suzhou, China**

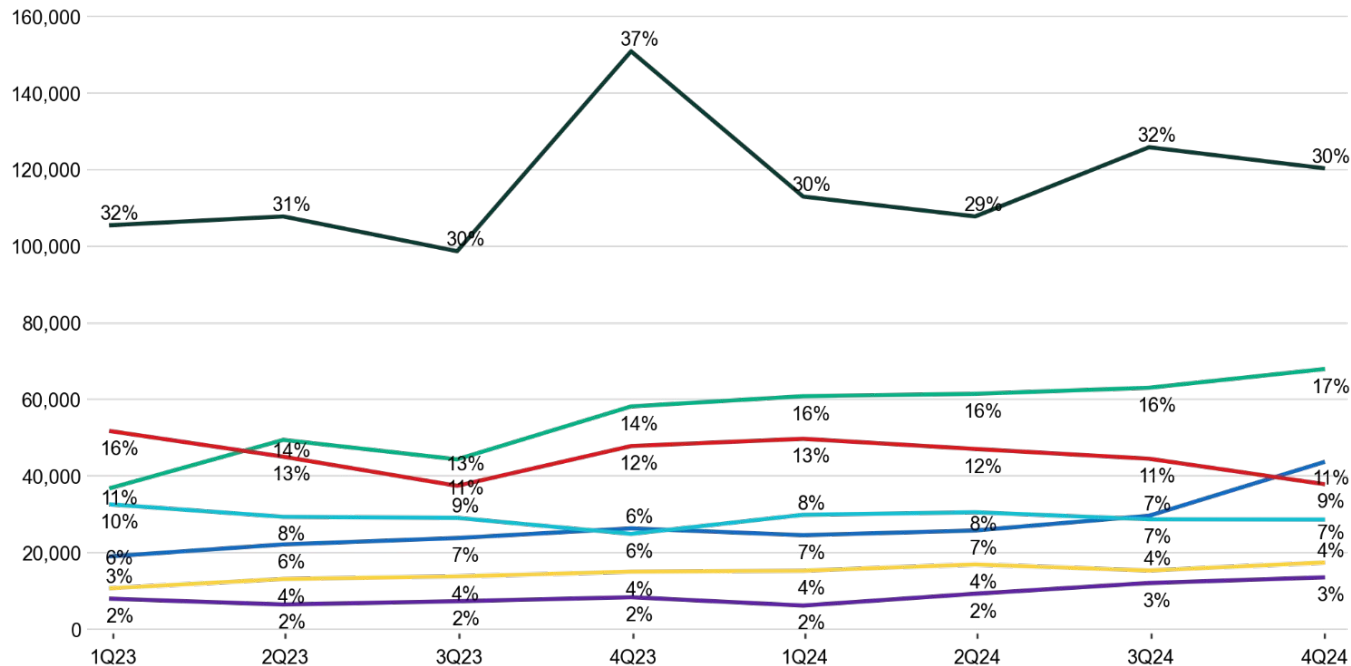


**2023, Set up global
factory in Vietnam**

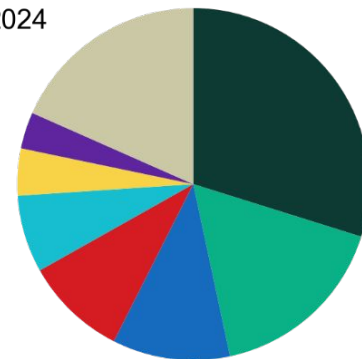


UC Market Tracker - Video Conferencing Hardware

Worldwide Units for 1Q 2023 to 4Q 2024



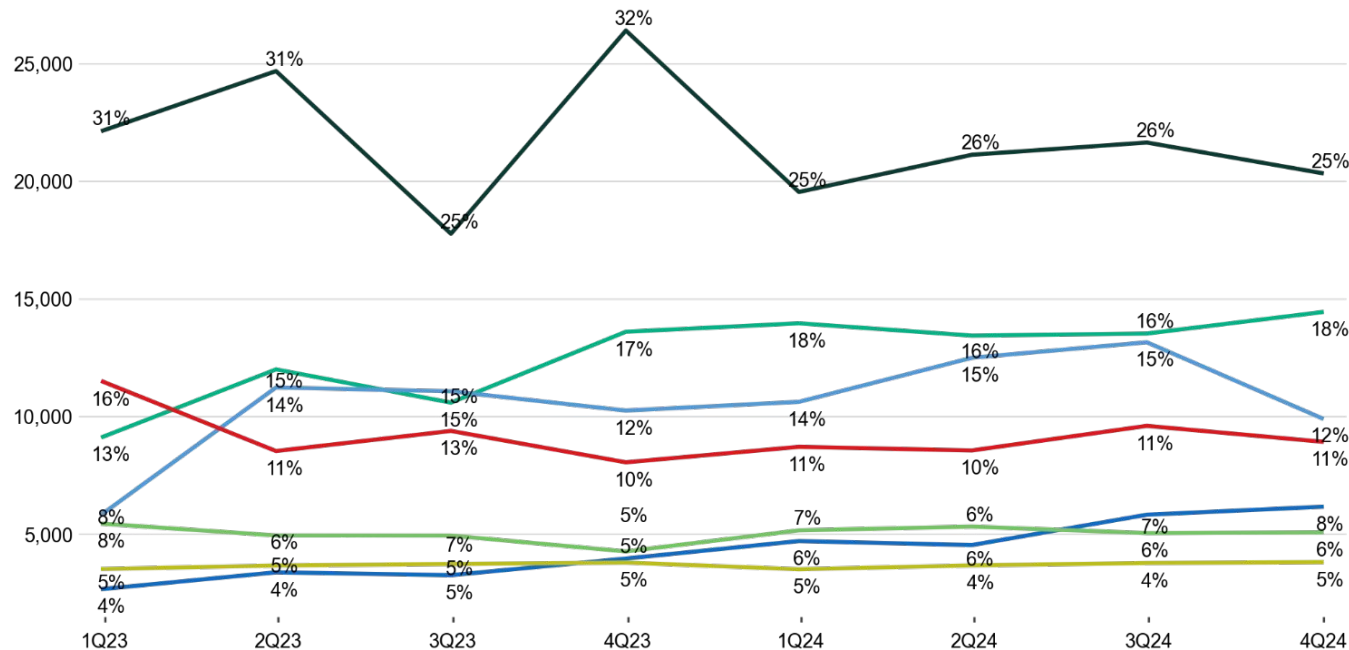
4Q
2024



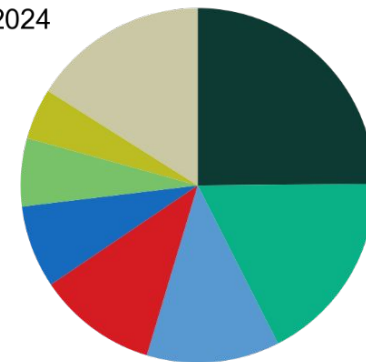
Source: Synergy Research Group - Published March 14, 2025

UC Market Tracker - Video Conferencing Hardware

Asia-Pacific Units for 1Q 2023 to 4Q 2024



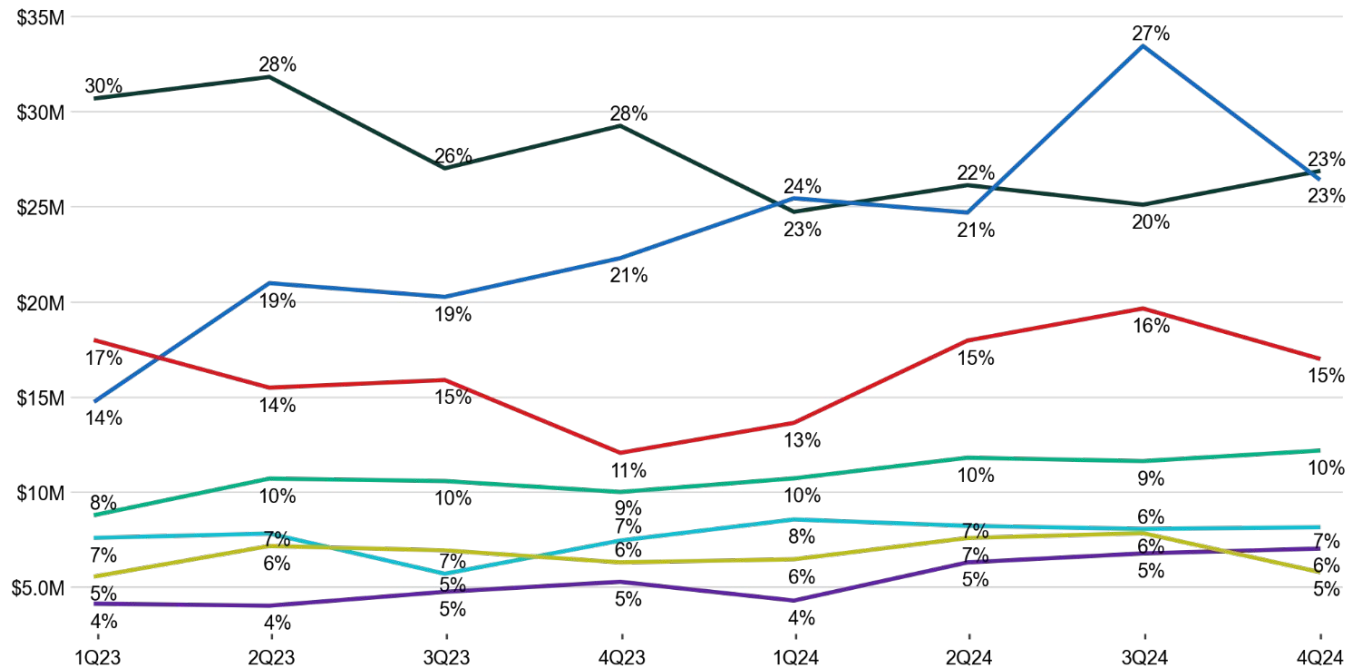
4Q
2024



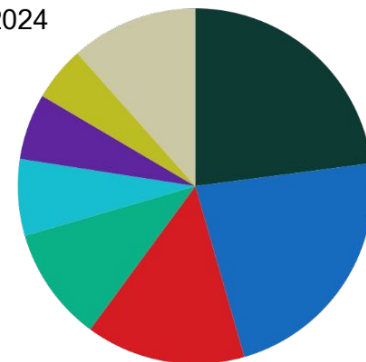
Source: Synergy Research Group - Published March 14, 2025

UC Market Tracker - Video Conferencing Hardware

Asia-Pacific Revenue for 1Q 2023 to 4Q 2024



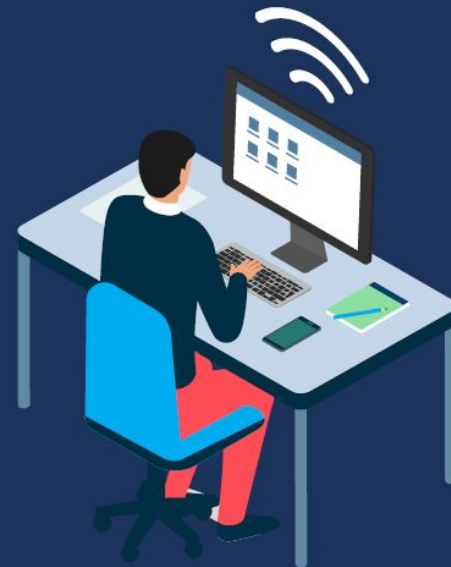
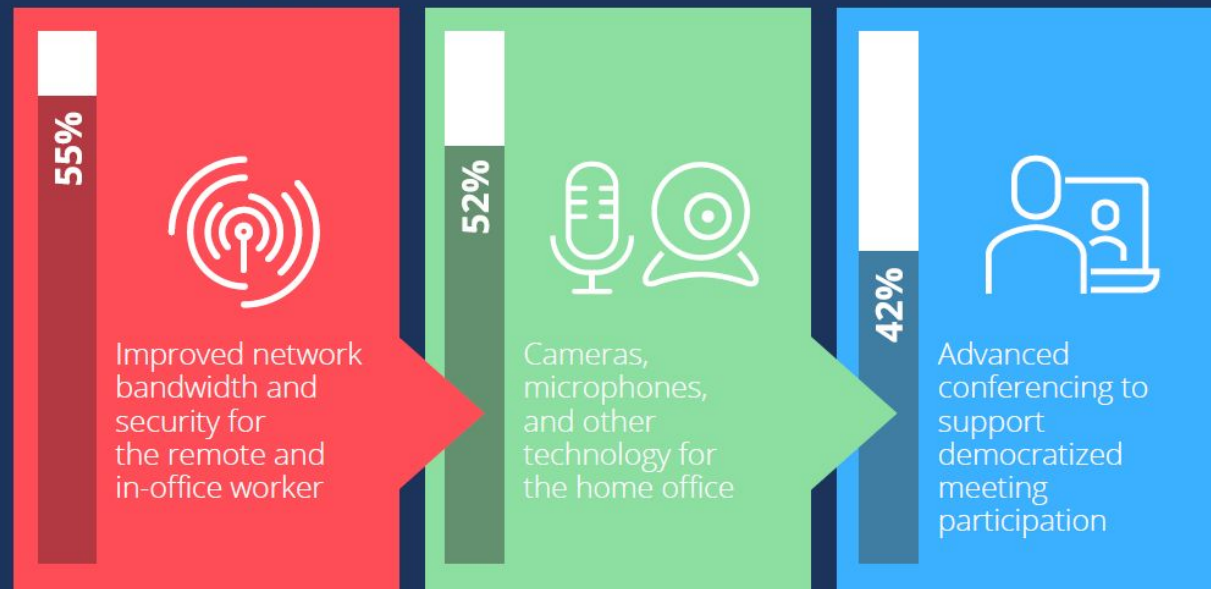
4Q
2024



Source: Synergy Research Group - Published March 14, 2025

Public sector organizations in Asia/Pacific focus on technology investment to improve employee experience

Seamless connectivity, gadgets for communication, and advanced conferencing solutions are the priority areas of investment to enhance the experience.



Download the **Infographic**

Source: IDC Future Enterprise Resiliency & Spending Survey - Wave 11, Dec 2021 (APEJ Public Sector, n = 88)

Sponsored by



What are the **key ingredients** to enabling engaging & collaborative experiences?

WHEREVER YOU WORK,
MEET AS EQUALS



Only one-third of participants feel heard

*"In the average meeting of twelve people,
only four people think they're heard"*

— New York Times best-selling author Keith Ferrazzi

Be seen.



Be heard.



Create and Collaborate.



Better meeting equity, from anywhere.



**#1 WORLDWIDE
MARKET SHARE IN
WEBCAMS**

**#1 WORLDWIDE
MARKET SHARE IN
KEYBOARDS & MICE**

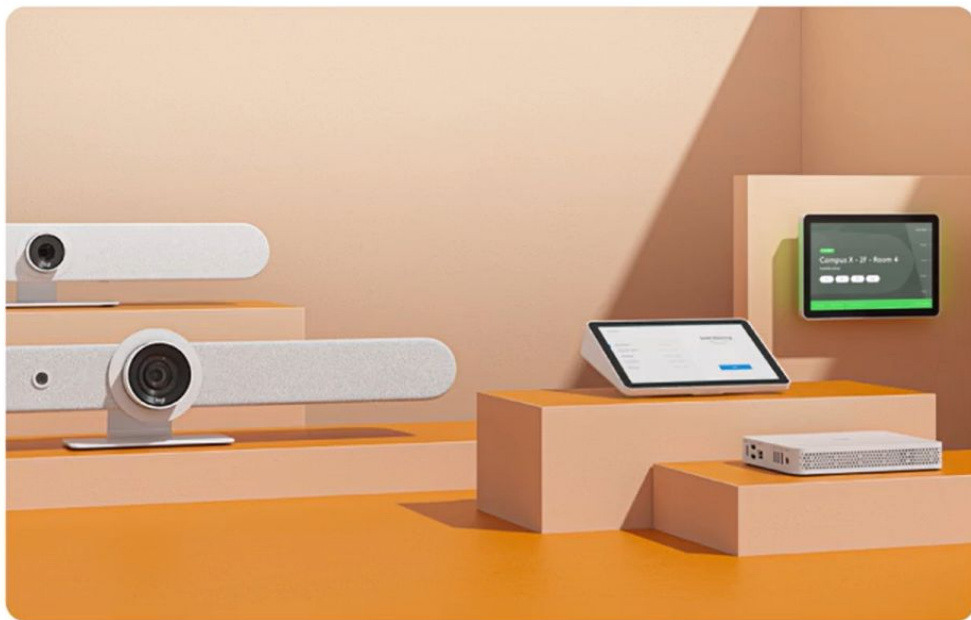
**#1 WORLDWIDE
MARKET SHARE IN
CONFERENCE ROOM
CAMERAS**

SEAMLESS INTEROPERABILITY WITH THE PLATFORMS AND DEVICES USED BY GOVERNMENTS



iOS

macOS



Collaboration Spaces : **FOR EVERYWHERE WORK HAPPEN**

Solo



Focus



Huddle



Standard



Large



Brainstorm



Training



Ideation





EASY TO DEPLOY,
USE, & MANAGE

AND

REDUCE COSTS



SUPPORT
CONTINUITY
OF OPERATIONS

AND

IMPROVE
READINESS &
RESPONSE

ADVANCED SECURITY FEATURES TO HELP SAFEGUARD CRITICAL DATA AND COMMUNICATIONS

*Logitech TAA/NDAA Compliant
Products*



AI-Powered Experiences

AI-POWERED EXPERIENCES

The Rise of AI

1 in 3

Use AI at work

75%

are already using AI

46%

started using it less than 6 months ago

11%

fewer individual emails were read by Copilot users

10

more documents were edits by Copilot users

Copilot users are seeing
improved meeting efficiency
and
fewer meetings

logitech®



RightSight 2



RightSound 2



Microsoft
Teams



Google Meet

zoom

Group View



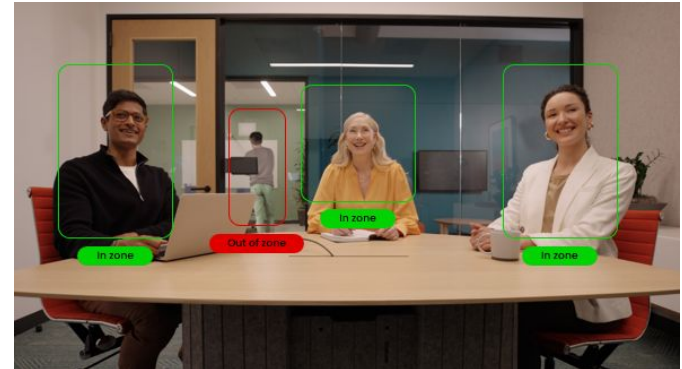
Grid View



Speaker View



Camera Zone



RightSound 2

AI Noise Suppression

AI Echo Suppression

Voice Equalization (AGC)



CONFERENCE CAMS : BYOD



CONNECT



LOGITECH GROUP



BCC950



LOGITECH MEETUP



LOGITECH RALLY



RALLY CAMERA

Personal Products

Beyond the office. Logitech's personal workspace products can enable employees to work from anywhere.



[MX Brio 705](#)



[Brio 505](#)



[Brio 305](#)



[Logi Dock](#)



[Zone Wireless 2](#)



[Zone Vibe 125](#)



[Zone True Wireless &
Wired Earbuds](#)



[Logi Dock Flex](#)

Easy to Enable Collaboration in All Spaces

Rally Bar huddle
Meetup2



Rally Bar mini



Rally Bar



Rally Plus



HUDDLE/SMALL



SMALL/MEDIUM



MEDIUM/LARGE



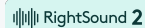
LARGE/X-LARGE

120° FOV 4K EPTZ Camera



AI-Powered Audio

Machine Learning-based Noise Suppression, de-reverberation, auto gain control, and beamforming



AI-Powered Speaker Framing



Group View
Speaker View
Grid View
Camera Zone



Built-in Privacy Shutter



Optional Accessories



Active
USB
Cable

Pair with
PC & Tap

Remote
Control

Use
MeetUp 1
Mounts

In the Box



Colors



Graphite

MEETUP 2

Upgrade your small meeting rooms with MeetUp 2, an intelligent USB conference camera. Use it with an in-room PC or connect it to a laptop for BYOD mode. It works with popular video conferencing platforms like Microsoft Teams, Zoom, and Google Meet.

MeetUp 2 is easy to set up and manage with multiple mounting options, clean cabling, and remote management via Logitech Sync. Plus, users can upgrade their BYOD experience with a single cable connection and access to digital signage.



Cable Management



Multi-Mount



Certifications*

Certified for
Microsoft Teams



Google Meet

Compatibility



Sync



CollabOS

Sustainability

Made with a minimum of 62% certified post-consumer recycled plastic and recycled aluminum. Uses FSC-certified paper for responsible packaging.



Service Plan & Warranty



Logitech Select up to 5 Years.

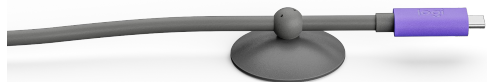
2 Year Standard Warranty:
Extendable up to 5 Years.



Extended
Warranty

Upgraded BYOD

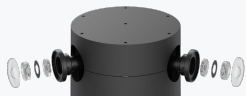
Remotely Manage
Single Cable (Optional)



Requires Rally Bar & Rally Bar Mini



See And Be Seen



Dual 4K sensors
315° effective
Field of View

Hear And Be Heard

7 omnidirectional mics
with acoustic beams



Dedicated Mute Buttons



See People Clearly

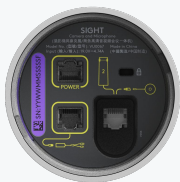


LOGITECH SIGHT

AI-powered tabletop camera
that delivers a more equitable
video conferencing experience



Simple Installation



Colors



Capture The Action



Mount Options



Works With



Compatibility



Sustainability

Made with up to 59% certified post-consumer recycled plastic*. Uses low-carbon aluminum & FSC-certified paper for responsible packaging. Logitech is certified carbon neutral.



Service Plan & Warranty



Logitech Select up to 5 Years.

2 Year Standard Warranty:
Extendable up to 5 Years.



Extended
Warranty

* Graphite made with 59%, White made with 50%. **All certifications are pending

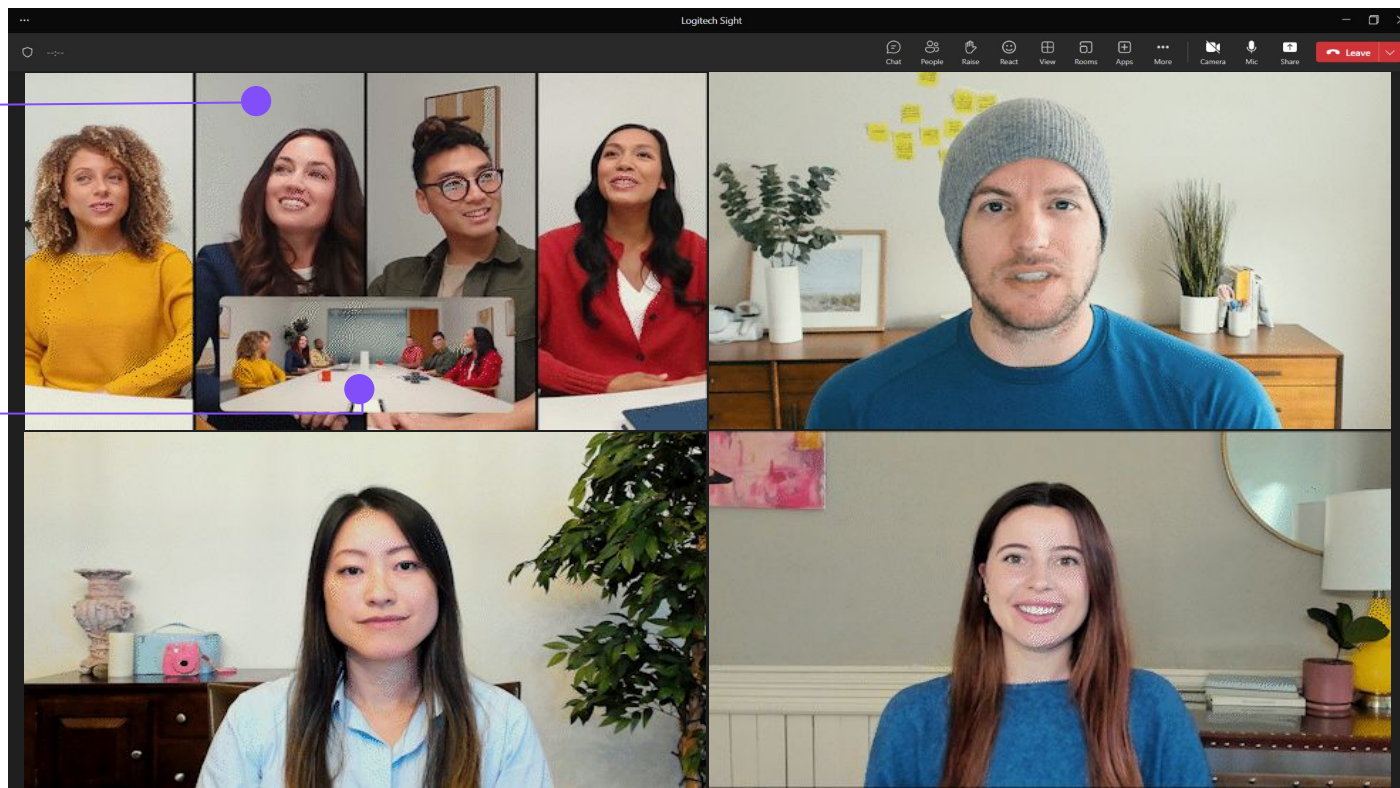
THE BEST VIEW FROM ANYWHERE LOGITECH SIGHT

Active Speakers

Captured by Sight

Front of Room Context

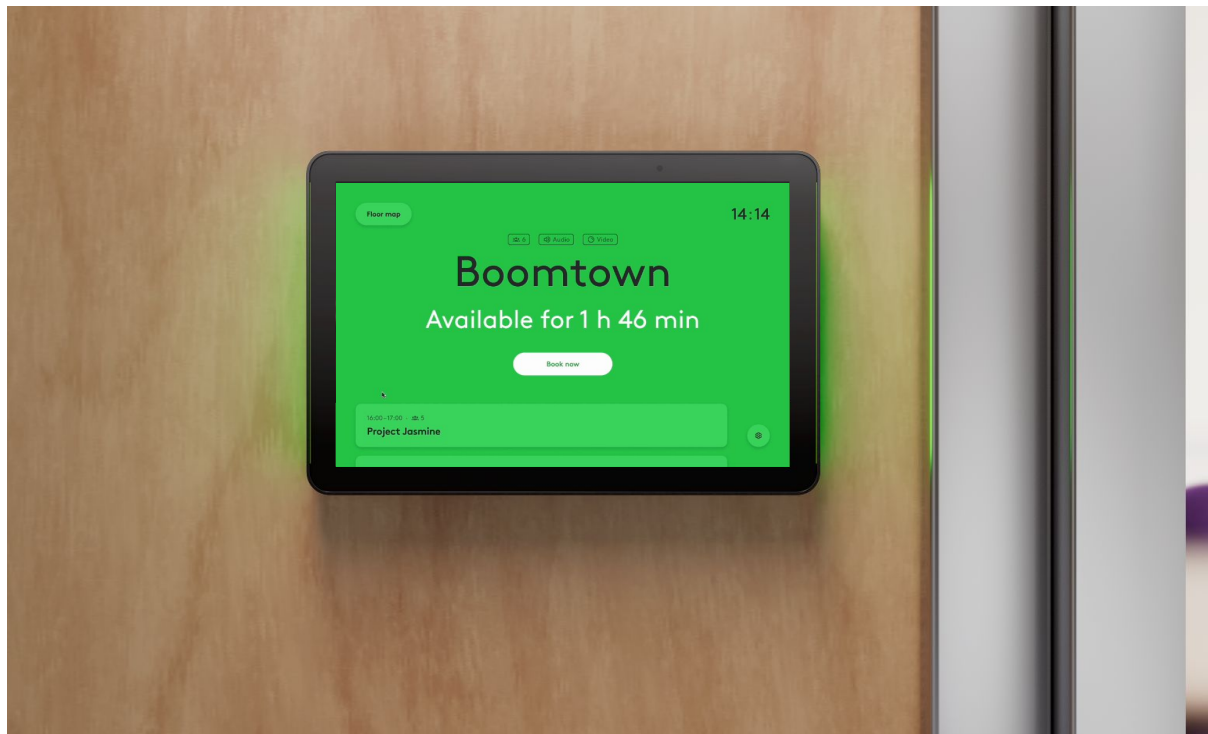
Captured by Rally Bar



TAP SCHEDULER: Room Booking

Setup Room Booking and enable employees to find and book their meeting rooms.

- Complete room booking
- Google/Microsoft integration
- Device/policy management
- Mobile and desktop app
- Custom wallpapers
- Insights
- Maps
- Everything in Sync



TAP SCHEDULER



Making Meetings Easy
Availability at a distance



Rally Board 65"

A woman with long brown hair, wearing a grey plaid blazer and blue jeans, stands in a modern office space, interacting with a large digital whiteboard. The whiteboard is mounted on a silver metal stand with four wheels. The office has a high ceiling with exposed wooden beams and modern lighting. In the background, there are glass-walled meeting rooms, a table with orange decorations, and several tables with chairs. The floor is made of large, light-colored tiles.

Rally Board 65

Enterprise Headsets Portfolio

Core

Zone 305



Wireless

Advanced

Zone Wireless 2



Wireless

Alternate Styles

Zone Vibe Wireless



Wireless

H570e



Wired

Zone Wired



Wired

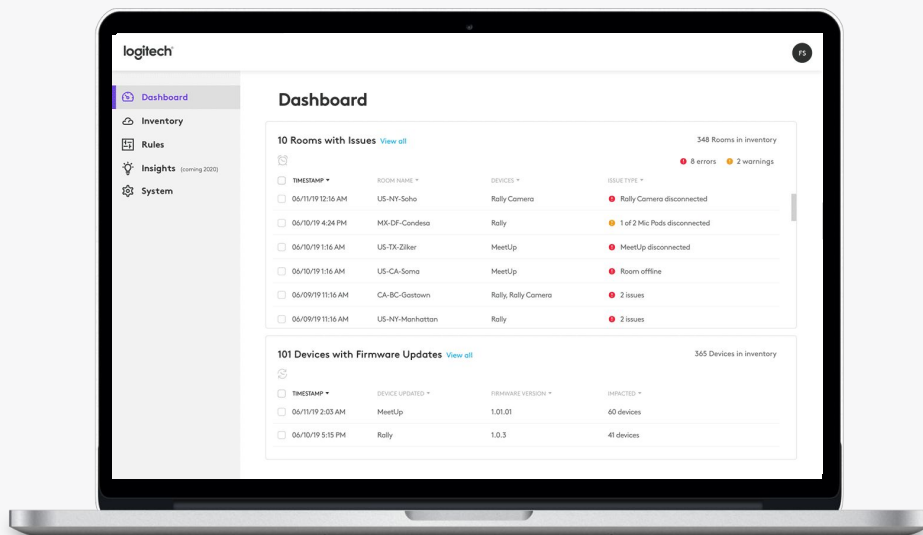
Zone Wired Earbuds



Wired

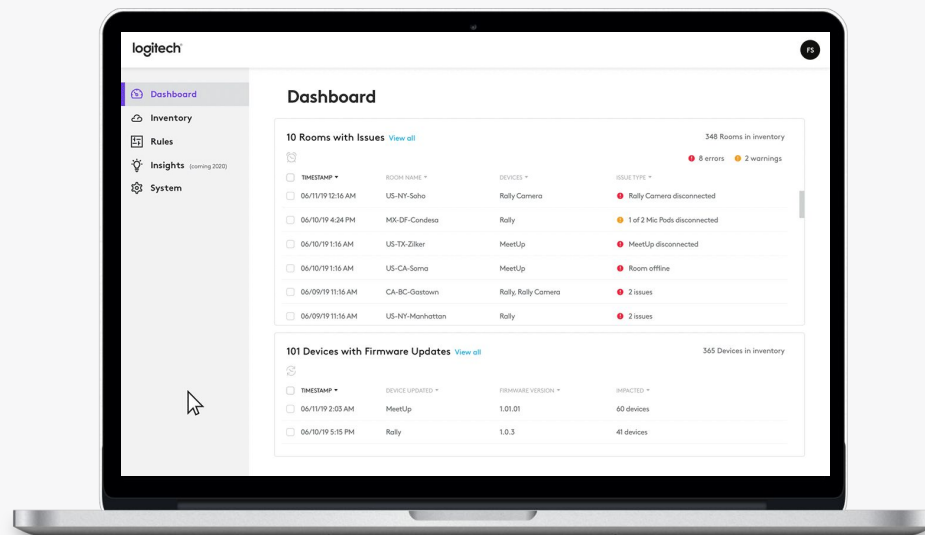
LOGITECH SYNC MONITORING

Check room and device status / info from anywhere



MONITORING

Three clicks to update your devices



MANAGEMENT

Logitech Services



Basic

Included w/purchase

Basic device management
Update and configure
Business support
2-year warranty
Desk booking



Essential

Everything in Basic, plus:

Alerts & ServiceNow
Insights
Sync Remote UI Access



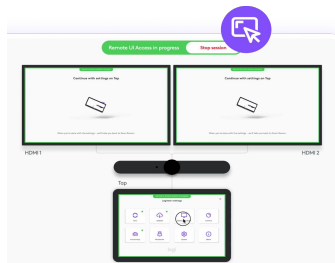
Select

Everything in Essential, plus:

24/7 assistance
Product replacements
Advanced RMA

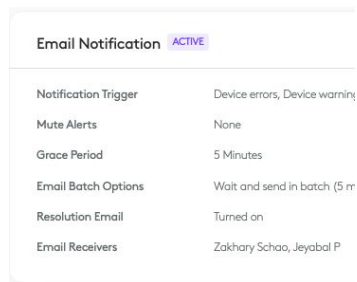
Premium Sync Software

Remote UI Access Alerts



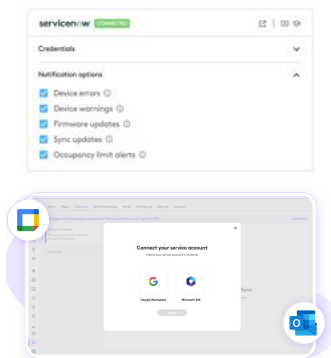
With Sync Remote UI Access (RUA) you can launch a session directly from your browser and get direct access to the device interface.

Alerts



If a device stops working, you will instantly get notified with alerts directly into your inbox.

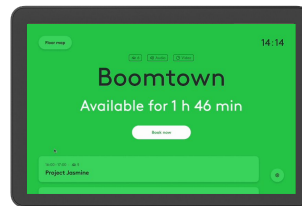
Integrations



Integrate Sync to your ServiceNow account to get even smoother IT operations.

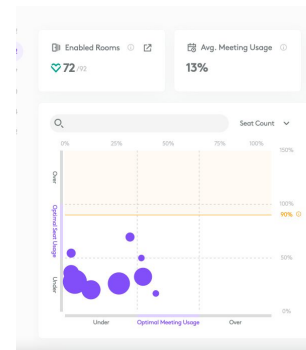
Our integrations with Microsoft 365 and Google Workspace allow you to enable Room Booking.

Room Booking



Logitech Room Booking, designed to work with Tap Scheduler, helps employees find and book meeting rooms quickly and easily.

Insights



Find out how your meeting spaces are being used through the analytics provided in Sync Insights.

Logitech is committed to
**removing more carbon
than we create by 2030.**

THANK YOU!

logitech