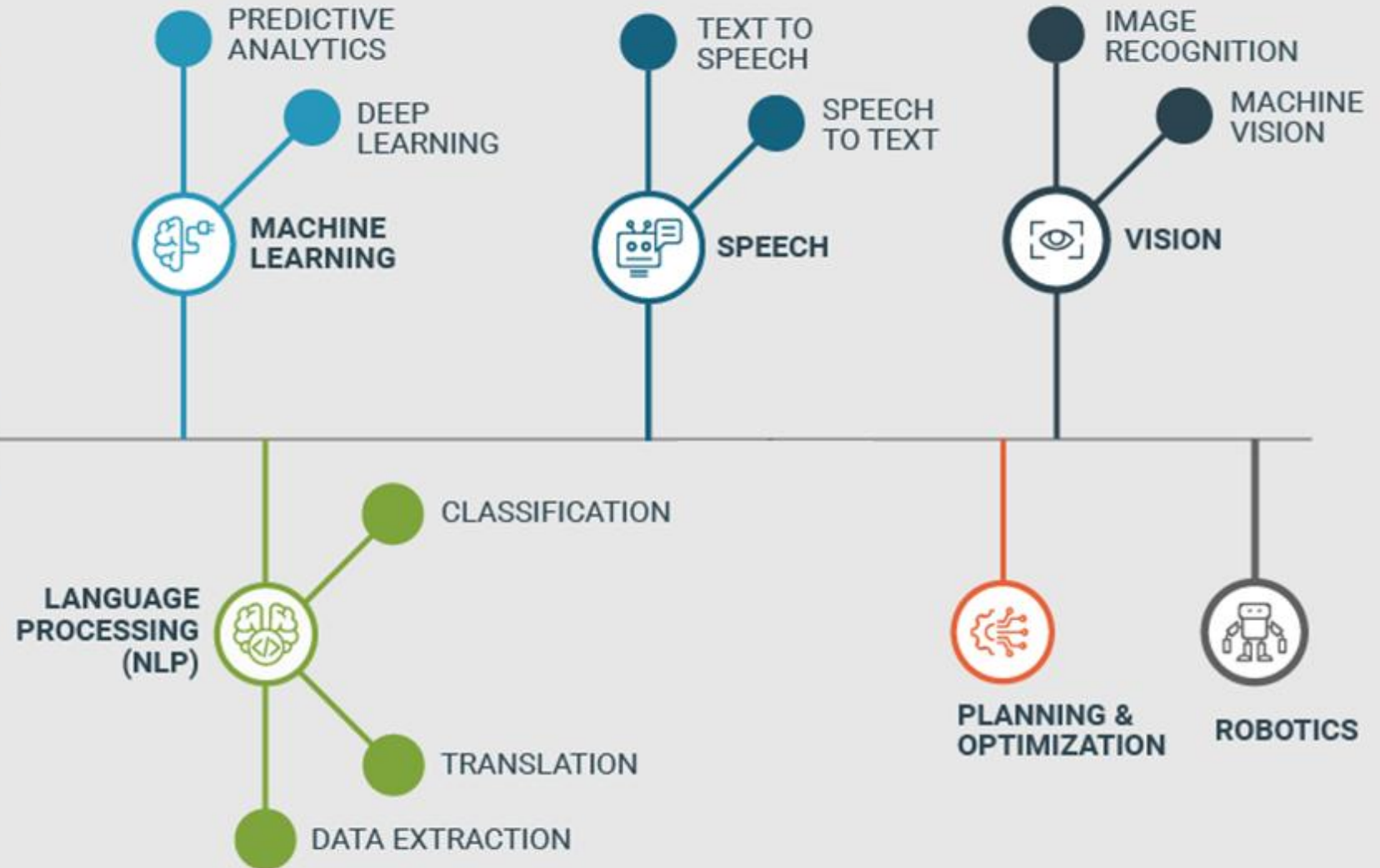




# **Gen-AI in Large-Scale Enterprise Robotics & Automation**

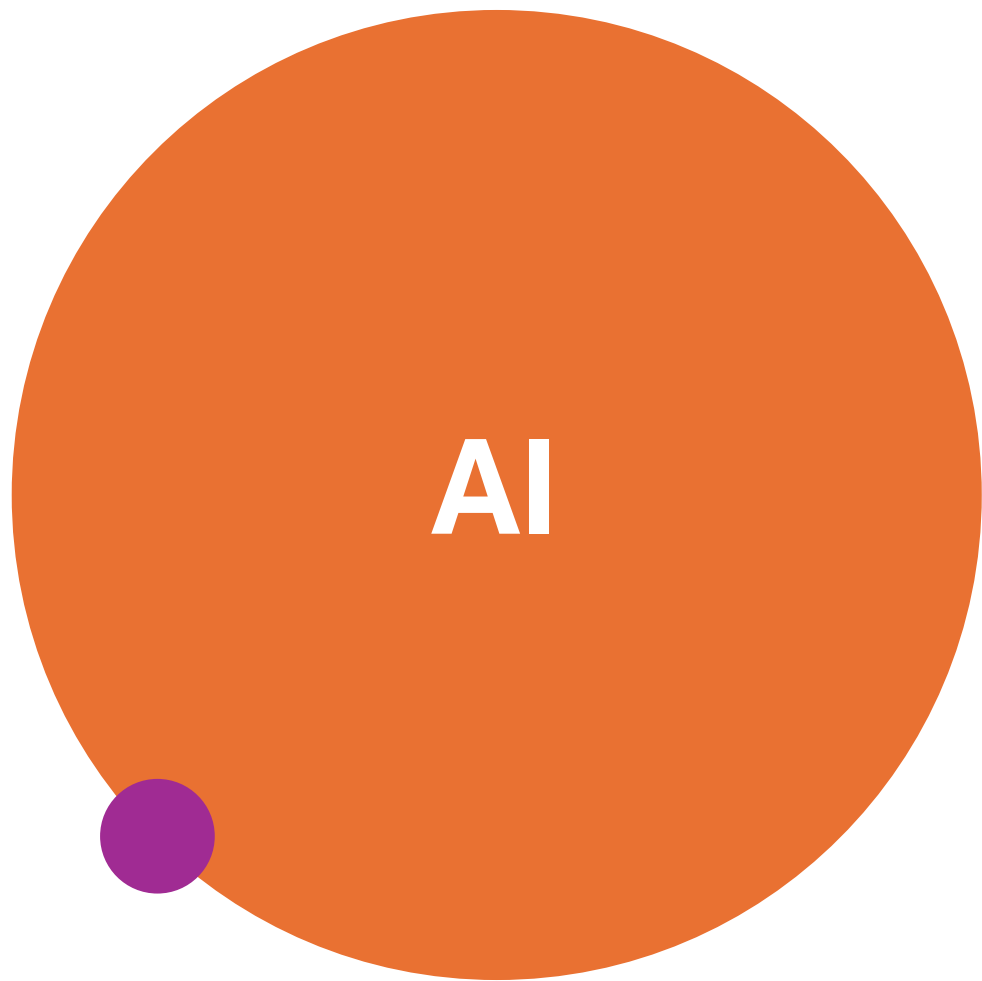
# ARTIFICIAL INTELLIGENCE



# Gen-AI and Robot

- What would a similar breakthrough look like for embodied systems like robots? Is it simply giving robots a ChatGPT-style interface, or could there be a deeper transformation in the offing?





## Use Case

- Customer Service
- Finance
- Human Resource



# AI Current State , Questions

*Is AI able to:*

- Perform tasks without supervision and monitoring?
- Think for cases not seen before and reacts accordingly?
- Generalize across various domains and tasks?
- Perform self-maintenance and upgrade?
- Provide the human touch?

# Considerations for Developing AI Models



Transparency



Fairness and  
Bias



Audit



Confidentiality



Ethic



# Bias in AI

- Happens when AI model or algorithm discriminate against certain group
- Produces undesirable outcomes and does not provide a fair assessment and judgement

## New Zealand passport robot tells applicant of Asian descent to open eyes

2 MIN READ



Select photo 



✗ The photo you want to upload does not meet our criteria because:

- Subject eyes are closed

Please refer to the technical requirements.  
You have 9 attempts left.

Check the photo [requirements](#).

Read more about [common photo problems and how to resolve them](#).

After your tenth attempt you will need to start again and re-enter the CAPTCHA security check.

Reference number: 20161206-81



# Risks and Dangers of AI









## Dangers of AI

- Weakening Ethics and Goodwill Because of AI
- Autonomous Weapons Powered By AI
- Financial Crises Brought About By AI Algorithms
  - algorithmic trading, they don't take into account contexts,
- Loss of Human Influence
  - in some parts of society. Using AI in **healthcare** could result in reduced human empathy and reasoning
- Uncontrollable Self-Aware AI
- Increased Criminal Activity
- Broader Economic and Political Instability
  - AI could run the risk of drawing so much attention and financial resources that governments fail to develop other technologies and industries

# Ghibli AI Creator Case Study



Ghibli-Style AI Images  
Raise Ethical Concerns





# How to Mitigate the Risks of AI

1

## Develop Legal Regulations

- U.S. and European Union are creating more clear-cut measures
- Develop new rules and guidelines for **AI safety** and **security**

2

## Establish Organizational AI Standards and Discussions

- On a *company level*, there are *many steps* businesses can take when integrating **AI** into their operations.
- Organizations can develop processes for monitoring algorithms, compiling *high-quality data* and explaining the findings of **AI** algorithms

3

## Guide Tech With Humanities Perspectives

- The creators of AI must seek the insights, experiences and concerns of people across *ethnicities, genders, cultures and socio-economic groups*, as well as those from other fields, such as *economics, law, medicine, philosophy, history, sociology, communications, human-computer-interaction, psychology, and Science and Technology Studies*