


# Arcserve Cyber Resilient

## Protecting Your Data with **Immutable Storage**



# Agenda

---

- 
- Top Trends in Cybersecurity
  - Arcserve Unified Data Protection
  - Arcserve Cyber Resilient Storage
  - Q&A



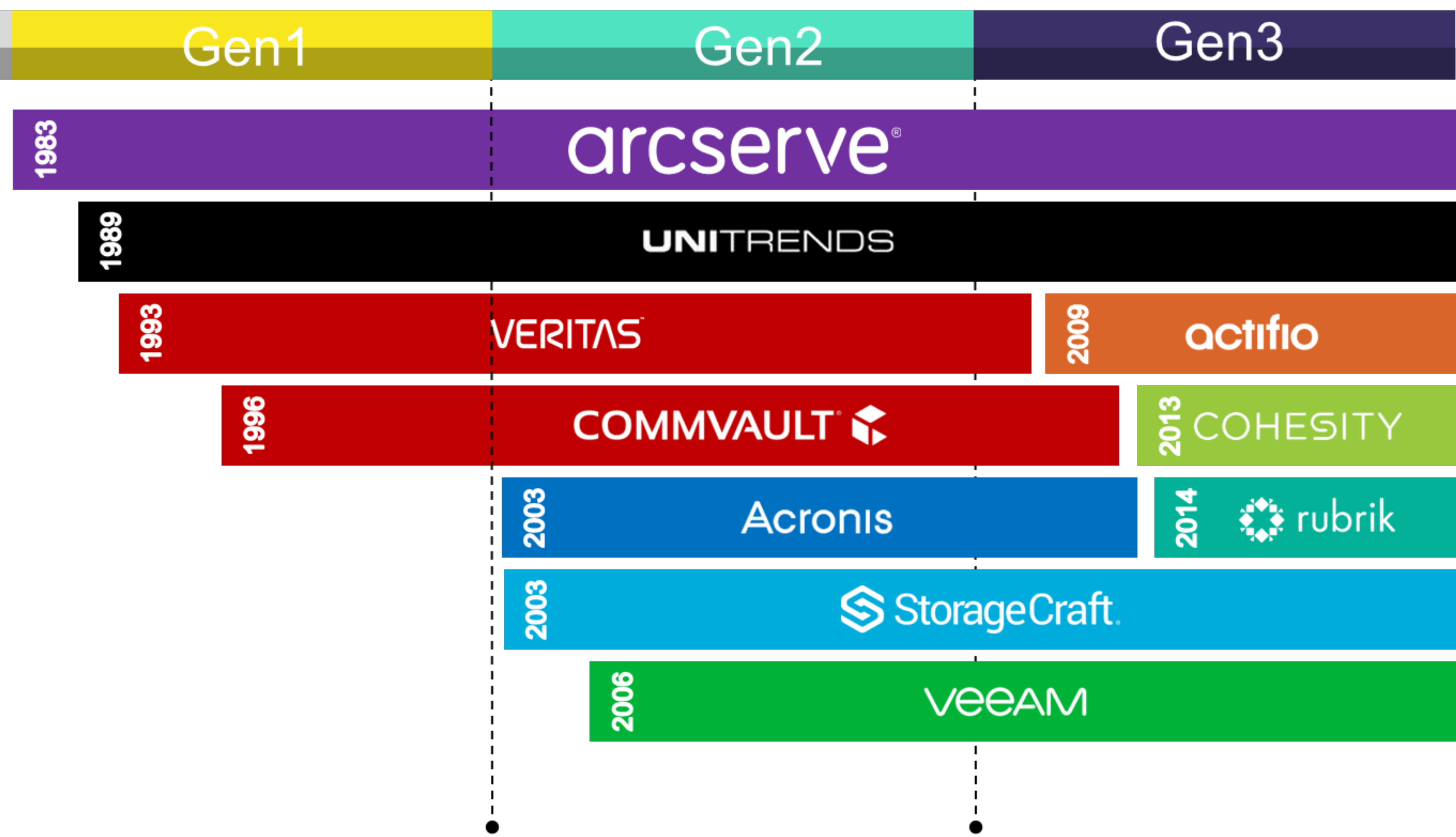
# arcserve®

## Experience & Innovation

- 40+ years in the market
- 150,000+ customers globally
- 30,000+ channel partners
- Presence in 150 countries
- Global team: offices in USA, EMEA, India, Japan, and many more

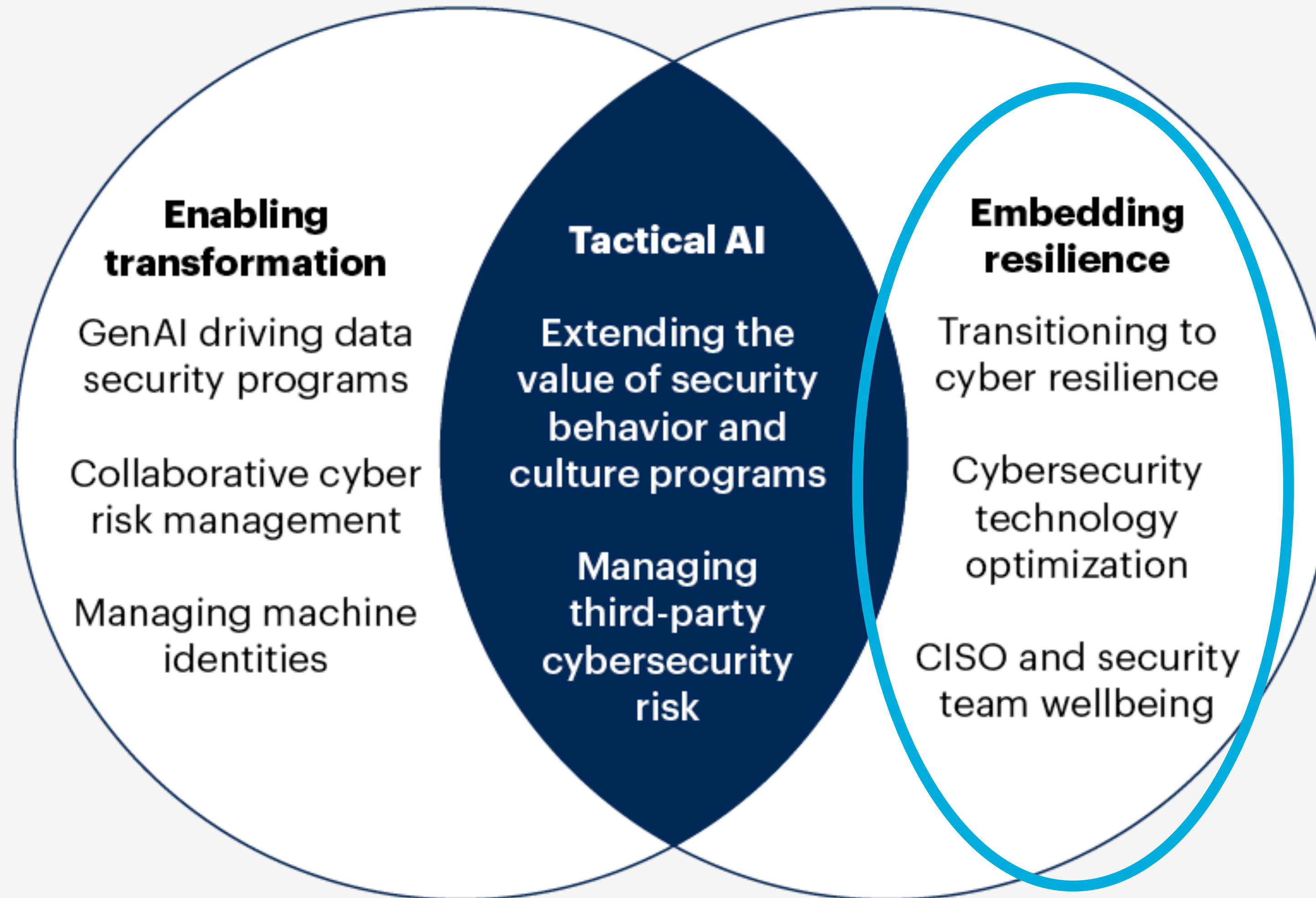


# The World's Most Experienced Data Protection Vendor





# Top Trends in Cybersecurity for 2025





# Challenges

## Ransomware and Cyberattacks



# Ransomware Reality Check (2025)

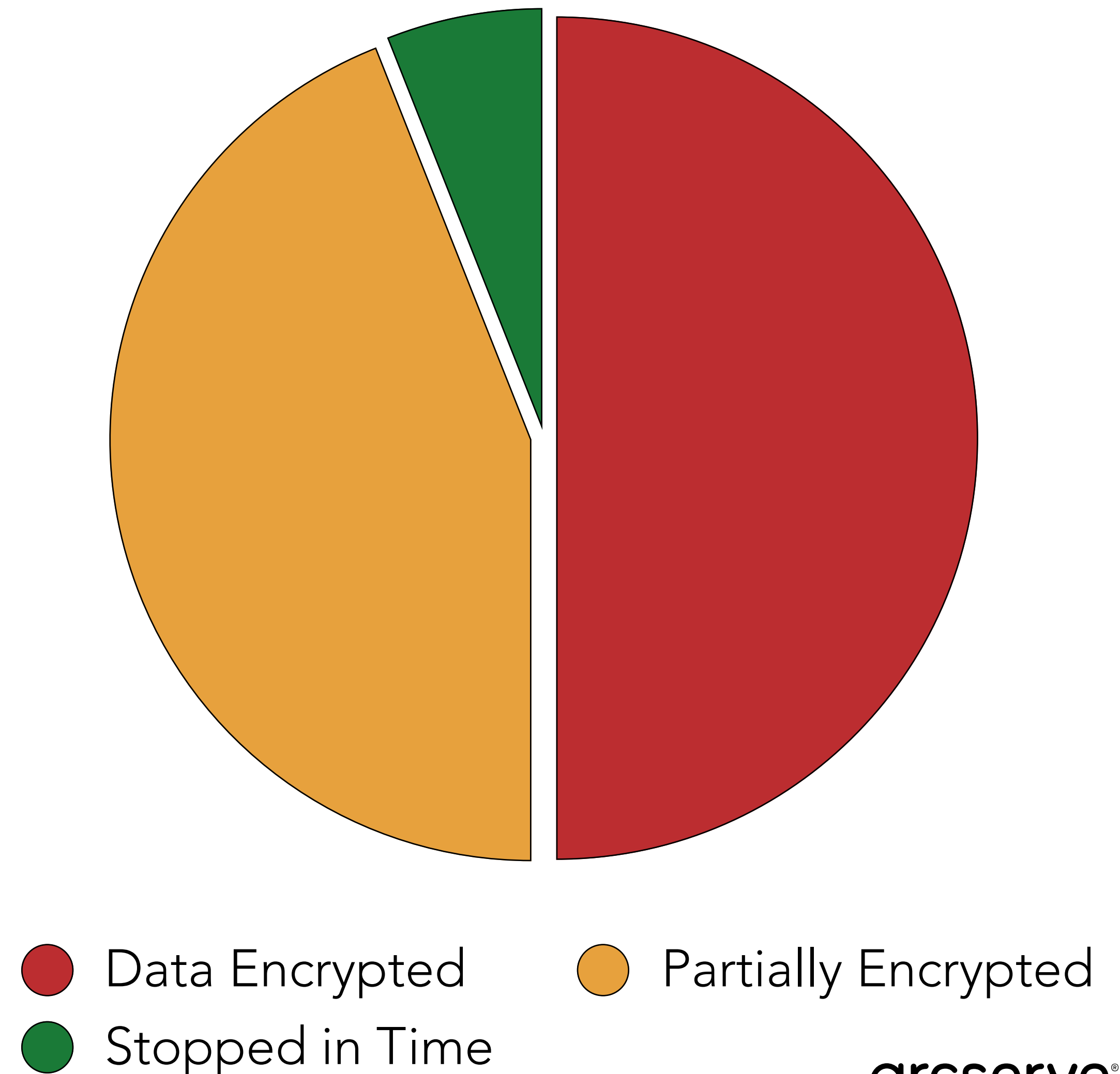
⚠️ "Your data remains highly vulnerable."

🔥 **50% of victims lose all data** — down from 70% in past years, but attackers are evolving faster.

🟡 **44% experience partial encryption** — critical systems are still disrupted, causing downtime and data loss.

📉 Only **6% stop attacks in time** — meaning **94% fail to prevent encryption**.

## RANSOMWARE ATTACKS





# Ransomware Data Recovery Methods

## Data Recovery with Backup – 41%

- Still the most common method, but dropped sharply: **73% (2022) → 41% (2025)**
- New ransomware strains often target backups directly (delete/encrypt files)
- Backups frequently fail or are unavailable when needed most

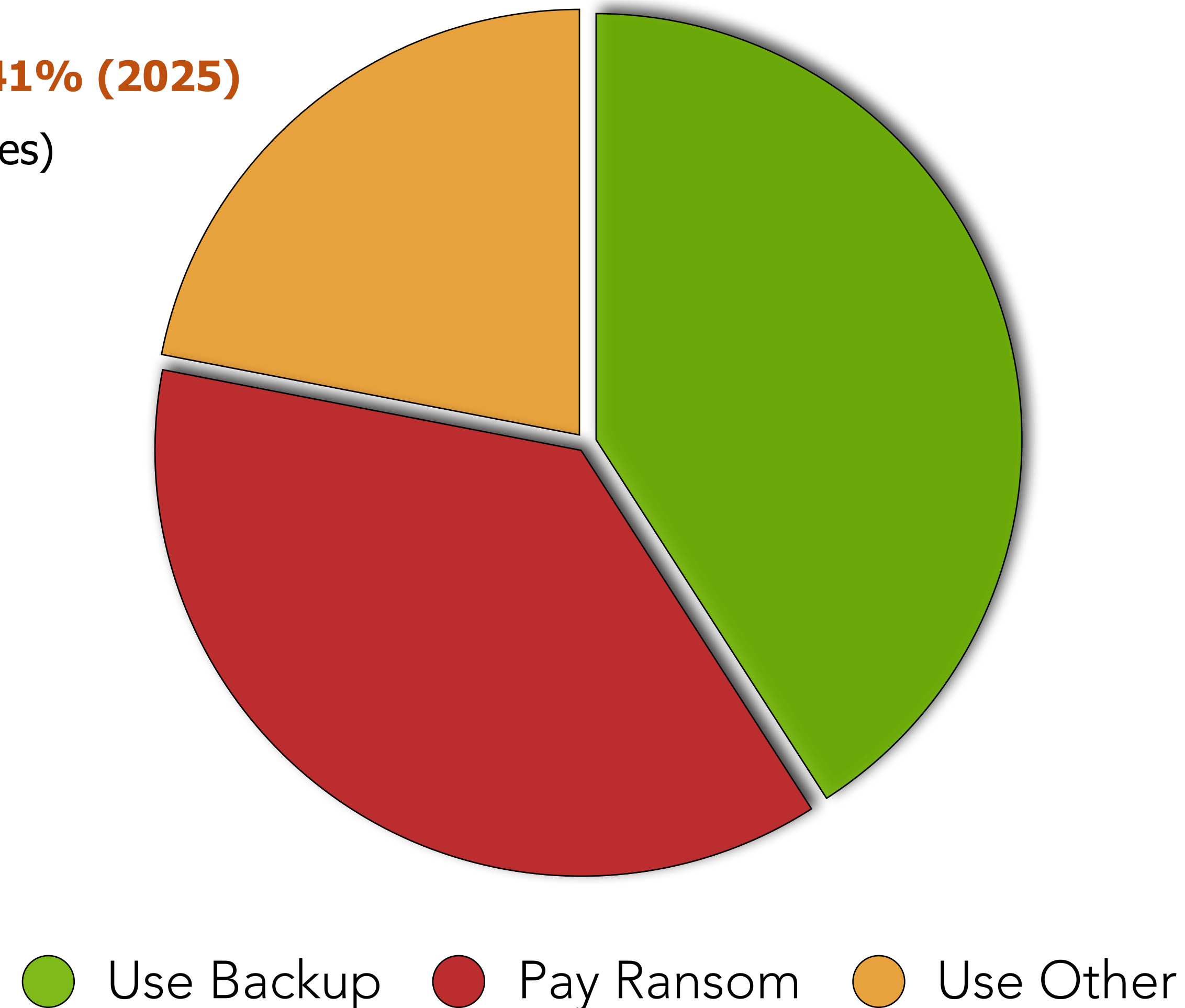
## Pay Ransom – 37%

- Growing share of victims choose to pay
- No guarantee of full data recovery or system security
- Encourages more attacks in the future

## Use Other Methods – 22%

- Includes cloud file sync, system rebuilds, and third-party recovery tools
- Often slower, partial, or incomplete recovery

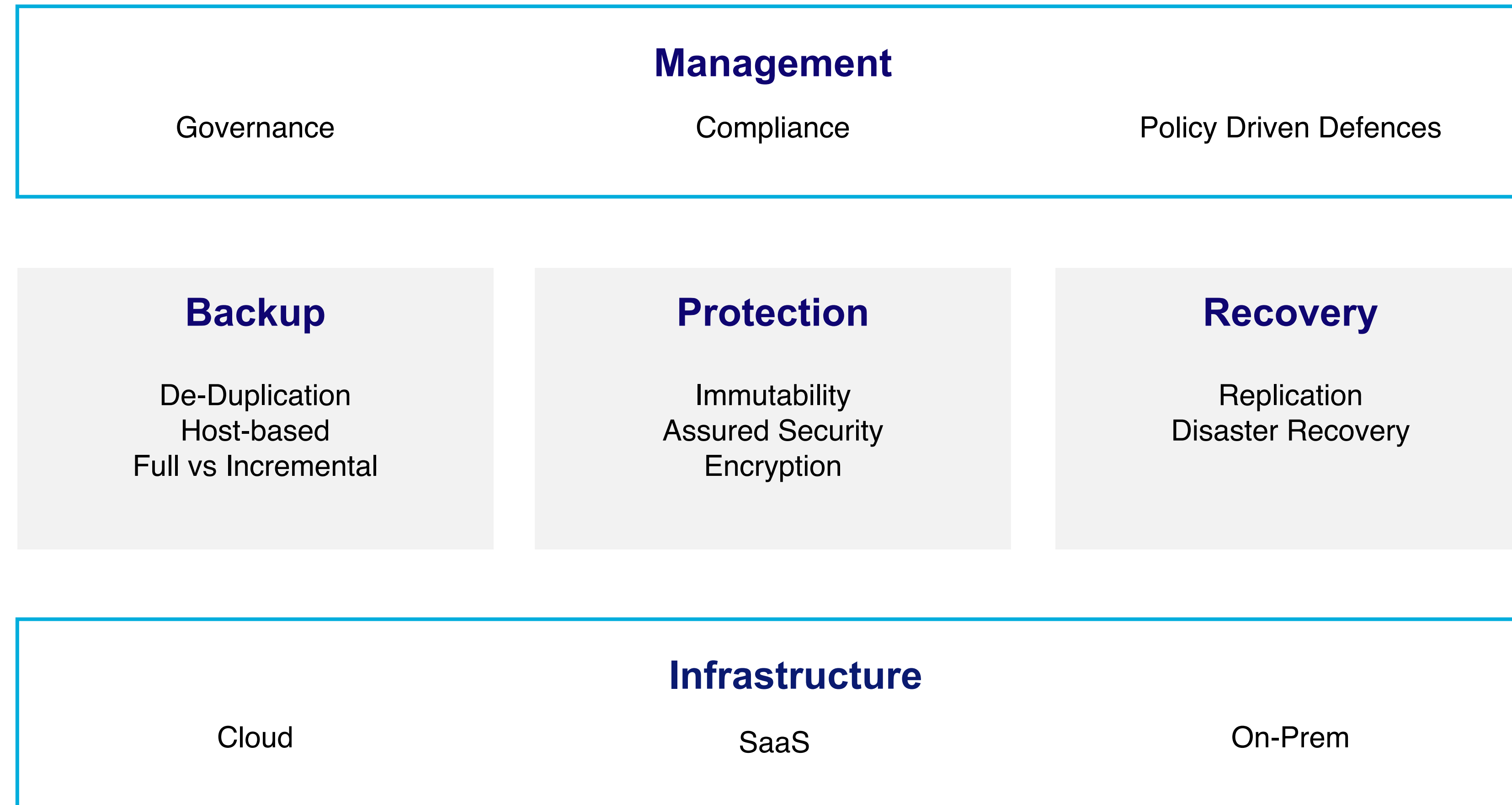
## RECOVERY METHODS







# Arcserve - Technology at the Core of Your Cyber Resilience





# Arcserve Unified Data Protection 10



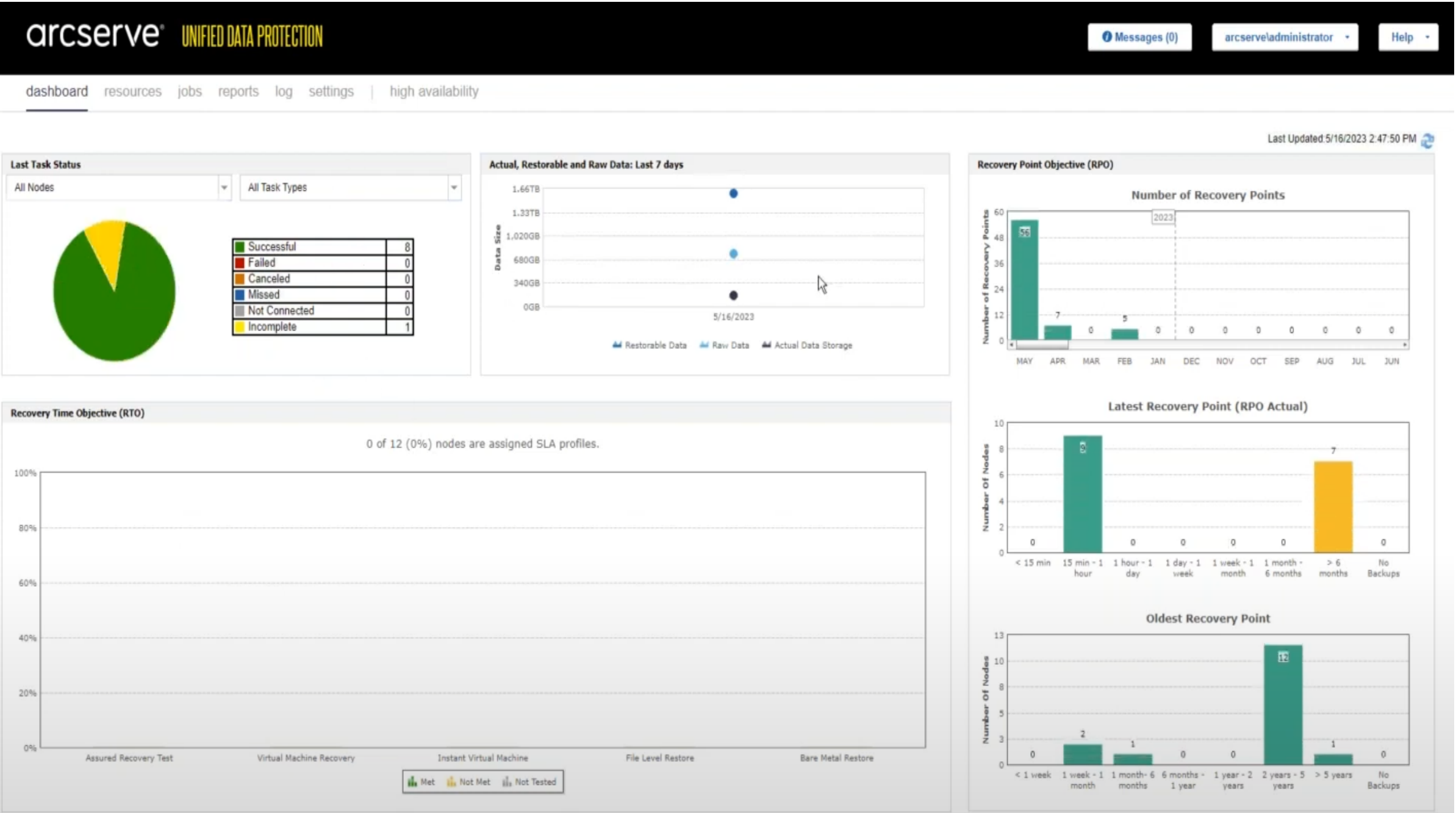
# Arcserve Unified Data Protection 10



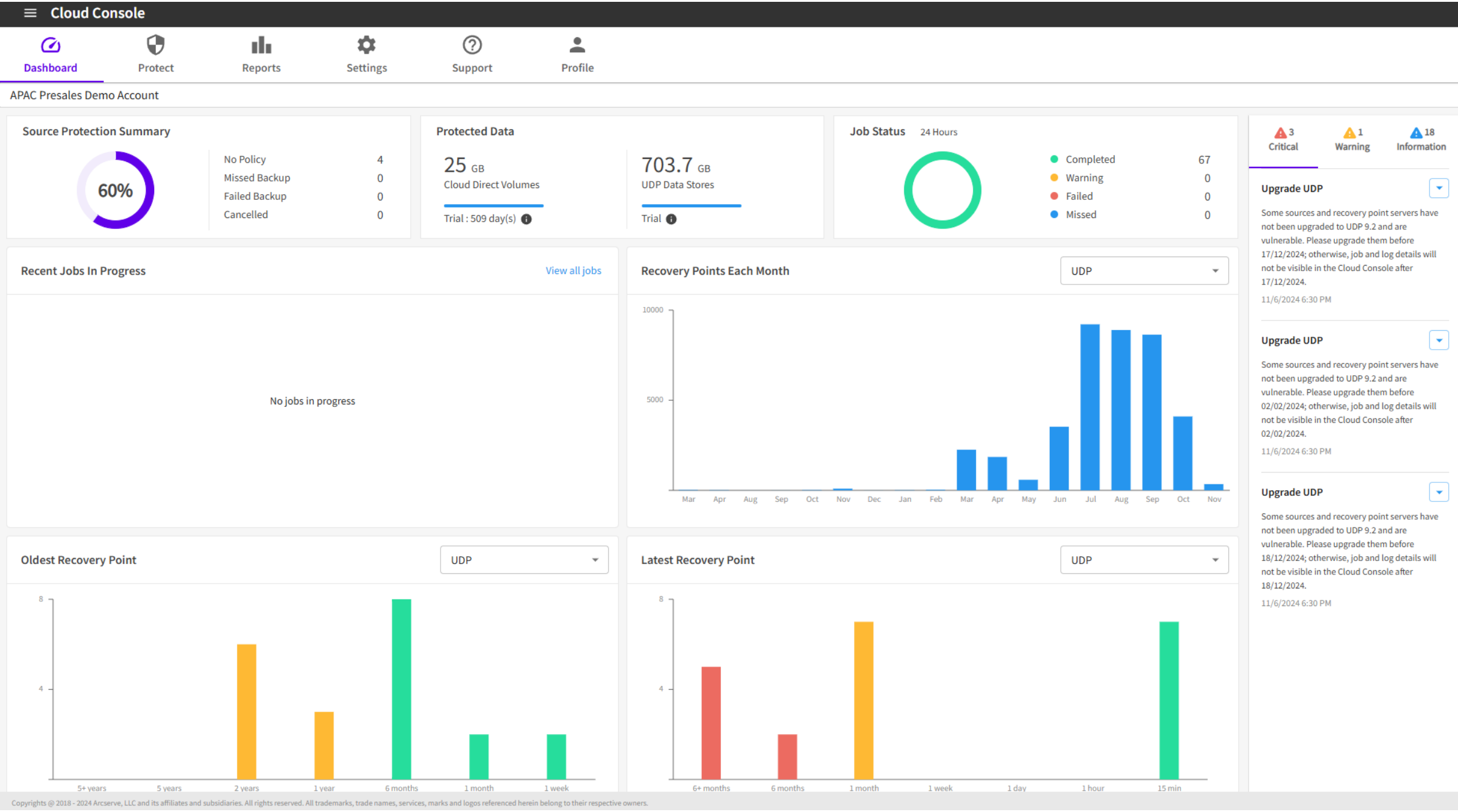


# Arcserve UDP 10: Management Console Options

## UDP Console (on-premises)



## UDP Cloud Console





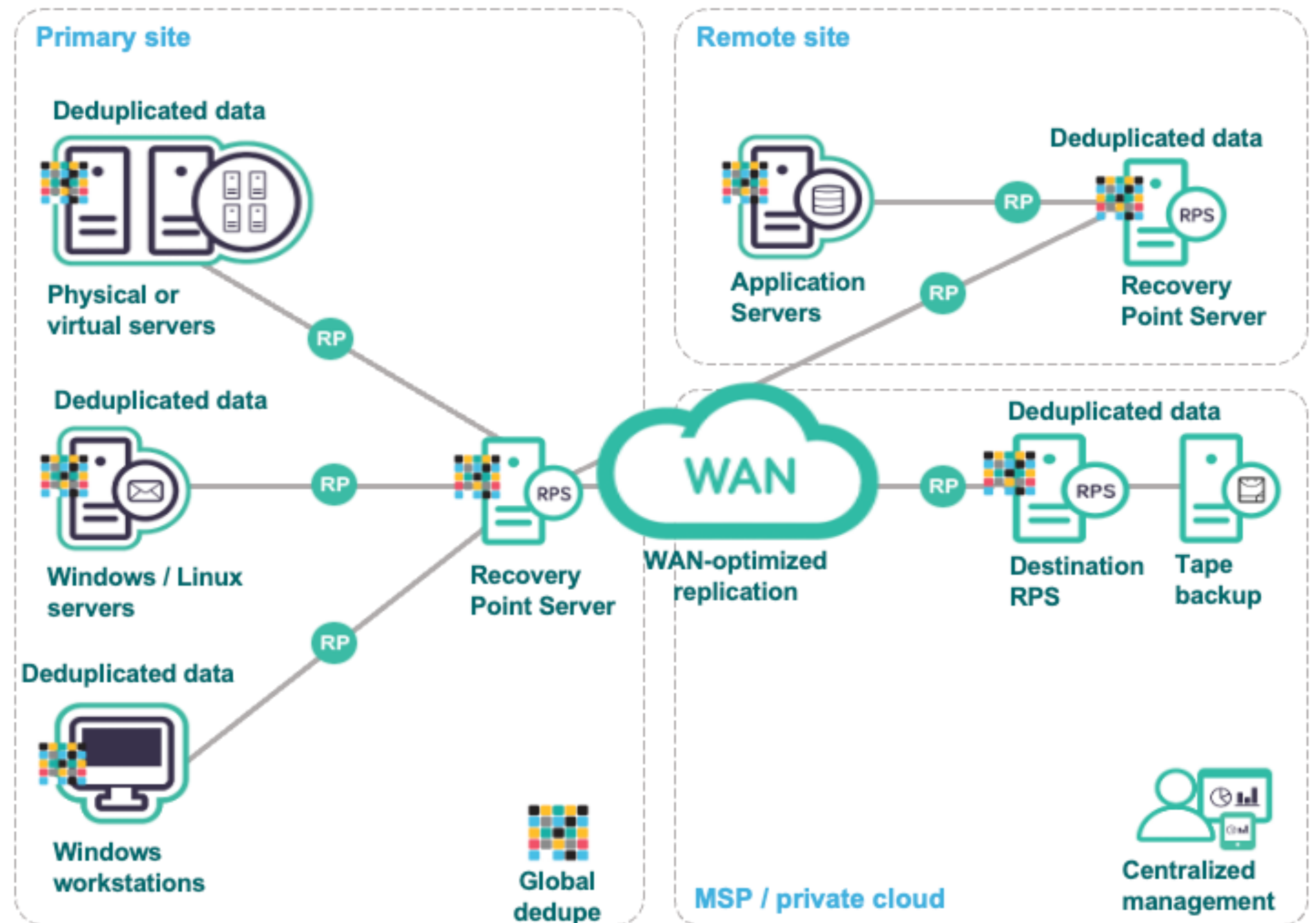
# Global Deduplication @ Source

## Data Capacity Optimized Backup

- Saves disk space & bandwidth
- Global deduplication, compression & encryption for efficiency & security

## Global Deduplication

- Deduplication at source → faster backups
- Applied across all recovery points
- Performed in-line as data is written





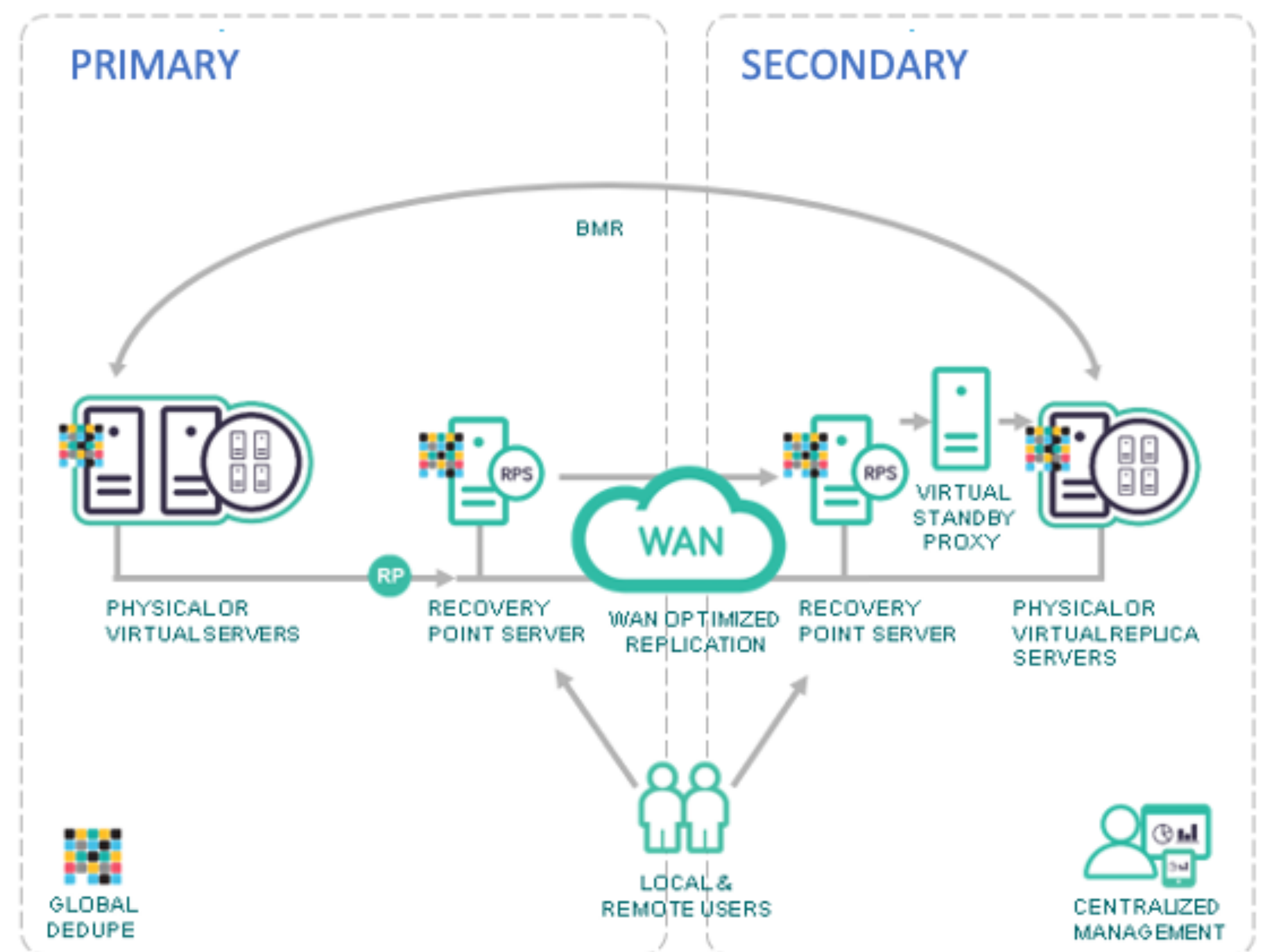
# Cluster-like HA & Instant Recovery

## Virtual Standby

- HA with auto/manual switchover
- Independent clone VM, updated every backup
- Built-in resilience for apps & file servers

## Instant VM & BMR Recovery

- Restore Windows/Linux VMs in ~2 mins
- Supports VMware, Hyper-V, Nutanix, AWS, Azure (agent/agentless)
- V2V, V2P & Instant BMR for local/remote recovery





# Any-to-Any Recovery

- Recover workloads across platforms (VMware ↔ Hyper-V ↔ AHV) plus P2V/V2P
- Instant VM / Virtual Standby for minimal downtime
- Automated disk/driver conversion and boot mode alignment (VMDK/VHDX/AHV, BIOS/UEFI)
- Non-disruptive DR tests with compliance-ready reports
- Failback to the original or a new platform when ready

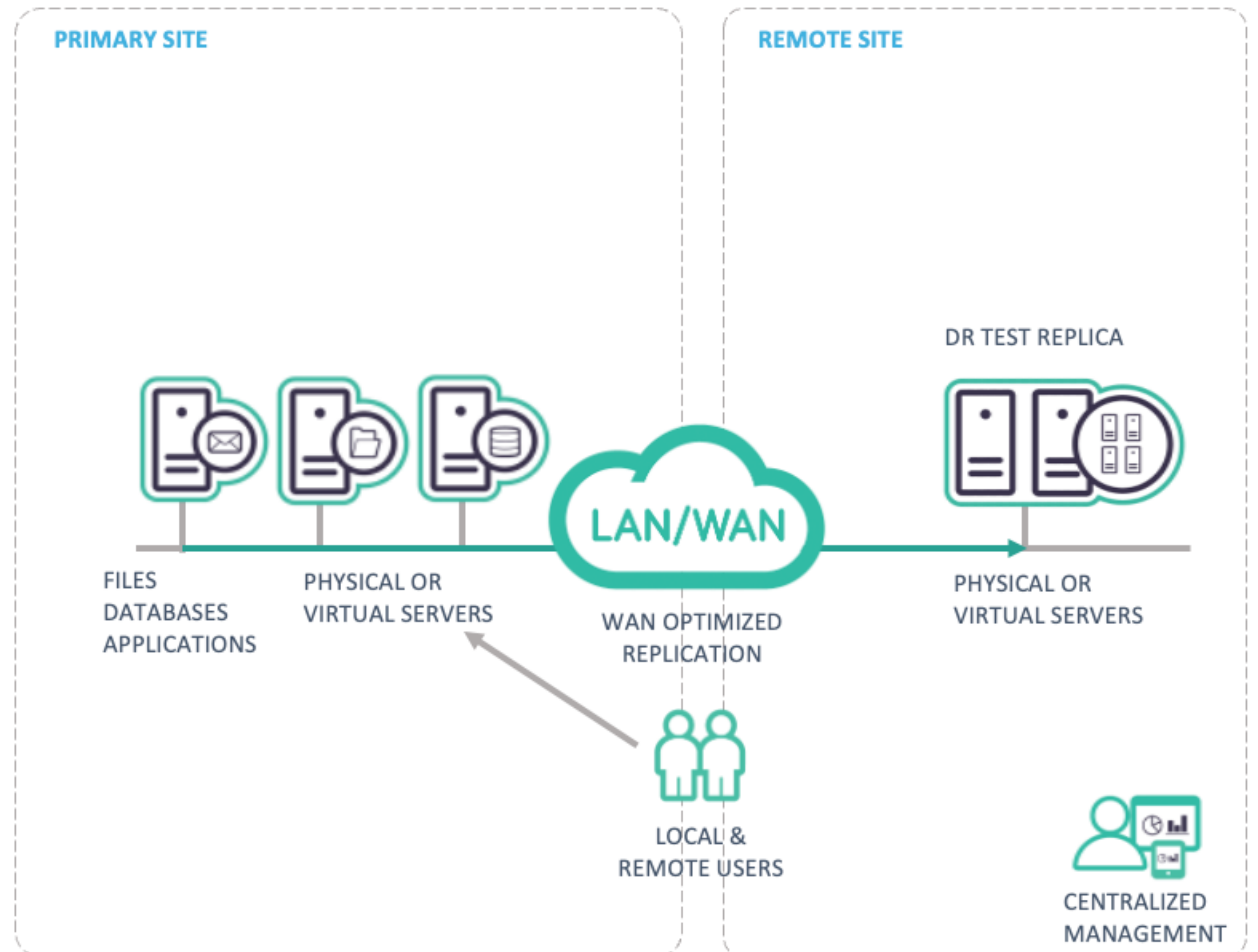




# Fully Automated DR Testing

## Assured Recovery

- Lowers DR testing costs & eases compliance
- Automated, non-disruptive testing on replica servers
- No production downtime, zero business impact
- Flexible: automated or scheduled testing
- Reports validate recoverability for business & auditors
- Mount recovery point as local disk to verify data integrity





# Arcserve 10.2 - What's New?





# New Features

---

- **Cyber Resilient Storage (CRS) Account Support**

Back up and replicate data to Arcserve-supported CRS endpoints, with immutable snapshots for ransomware protection.

- **Arcserve Cloud Cyber Resilient Data Store**

Take immutable snapshots directly to Arcserve Cloud CRS for enhanced data protection.

- **Cloud Data Store Support**

Add and import datastores on AWS, Azure, Google Cloud Platform.





# Enhancements

---

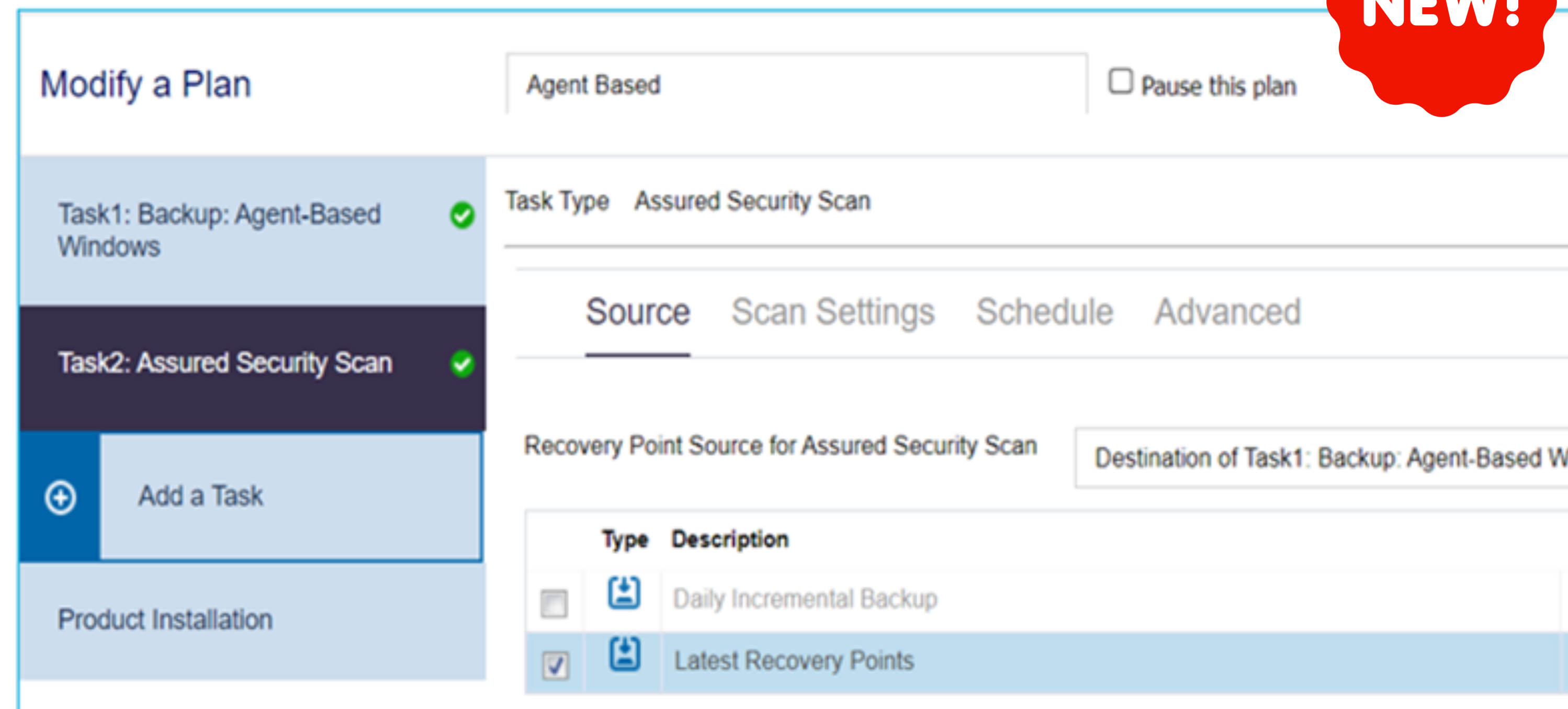
- **Assured Security Scan** – Scan recovery points for malware/malicious files before restoring (Windows only).
- **Virtual Standby to Google Cloud** – Convert recovery points to VM format on Google Cloud for instant HA/DR.
- **Ad-hoc Virtual Standby** – On-demand VM conversion from recovery points for immediate failover.
- **Read-Only Import/Mount** – Import an existing datastore as read-only for recovery purposes.
- **One-to-Many Replication** – Replicate from one source datastore to multiple destinations.
- **Mount SQL Database** – Mount SQL Server databases directly for recovery.
- **Remove Shared Folder (RSF)** – Simplifies datastore operations without shared folder dependencies.
- **UNC Path Password Length** – Supports up to **120 characters** for RPS datastore UNC path passwords.
- **TLS 1.3 Support** – Strengthened security during data transmission.



# Assured Security Scan

## Protect Against Re-Infection

- Scan backup & replica data for malware
- Run automatically (protection plan) or on-demand
- Trigger anytime: after backup or before recovery
- Supports agent-based, host-based, file paths & Oracle DB
- Reports malicious files in recovery points



The screenshot displays the 'Modify a Plan' configuration window in Arcserve. The plan is named 'Agent Based' and has a 'Pause this plan' checkbox. The task list on the left includes 'Task1: Backup: Agent-Based Windows' and 'Task2: Assured Security Scan', both marked with green checkmarks. Below the task list is an 'Add a Task' button and a 'Product Installation' section. The right pane shows the configuration for 'Task2: Assured Security Scan'. It has tabs for 'Source', 'Scan Settings', 'Schedule', and 'Advanced'. The 'Source' tab is active, showing the 'Recovery Point Source for Assured Security Scan' set to 'Destination of Task1: Backup: Agent-Based W'. A table below lists the scan targets:

Type	Description
<input type="checkbox"/>	Daily Incremental Backup
<input checked="" type="checkbox"/>	Latest Recovery Points

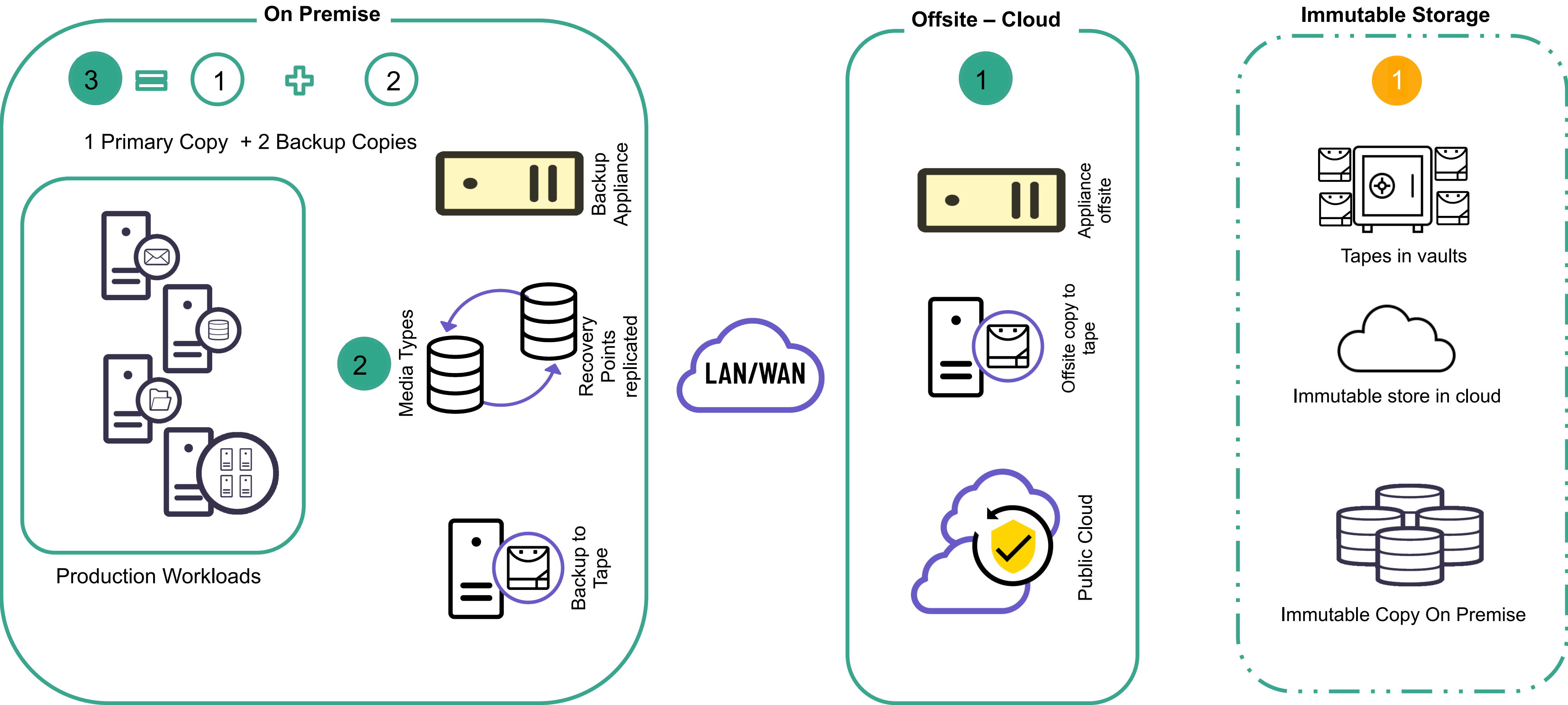
**NEW!**



# Arcserve **Cyber Resilient Storage**



# 3-2-1-1 Backup Strategy





# What Does Immutable Really Mean?



## **Data is FIXED**

Unchangeable

Cannot be deleted

Impervious to ransomware infections



## **Protection + Compliance**

Data corruption, malware, malicious or accidental data deletion

Meet compliance regulations by ensuring provably accurate historical data retained



## **Guarantee Recovery**

Ability to find and recover last clean backup on record

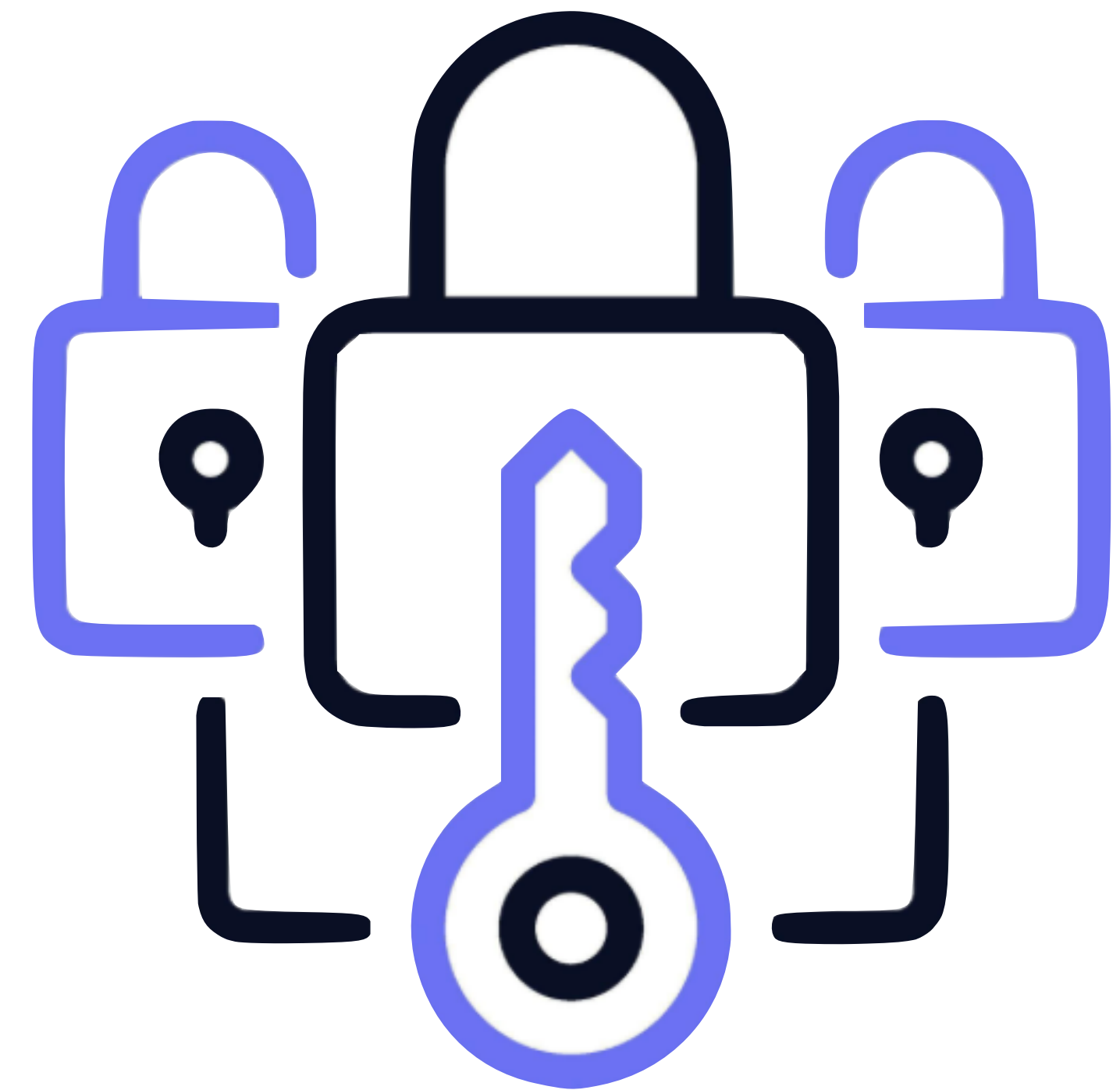


# Arcserve Cyber Resilient Storage

**CRS** works with UDP 10.2 to safeguard data from cyberattacks.

It enables immutable snapshots of entire data stores on-premises.

Your data remains unchangeable and fully recoverable against ransomware and threats.



Cloud



On-Premises



# Arcserve Cyber Resilient Storage



## Ransomware Protection

Keep backups safe & restorable with immutable, tamper-proof storage



## Regulatory Compliance

Simplify data retention for healthcare, finance & government



## Hybrid Cloud Protection

Migrate to resilient storage with security controls, no disruption

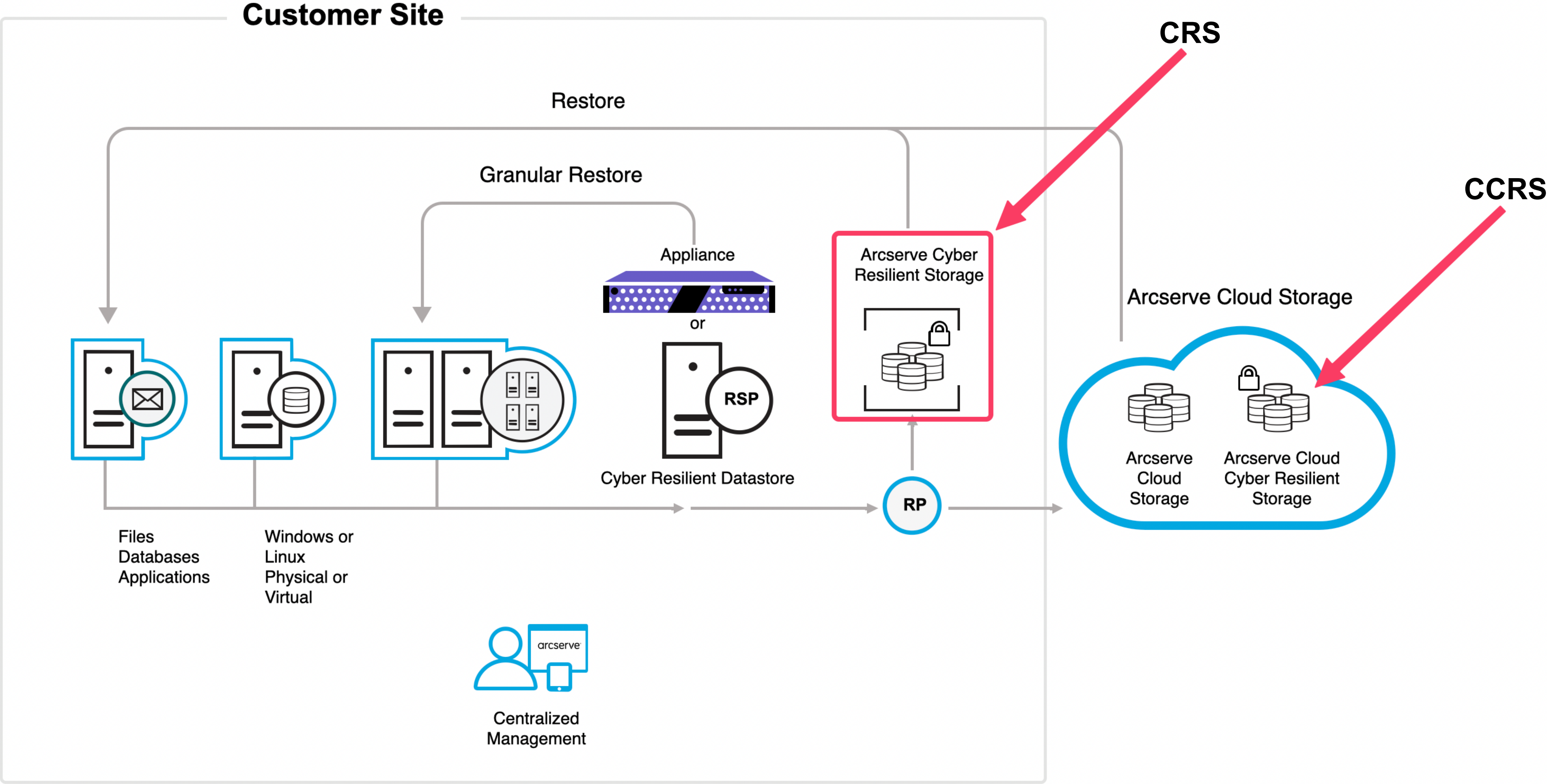


## Storage Optimization

Save costs via deduplication & controls while boosting resilience



# Immutable backups protect critical business data





# Cloud Cyber Resilient Storage – Guarding Against Ransomware

## Retention Policy

☒ Flexible Retention (Governance Mode)

*Users with specific IAM permissions can overwrite or delete protected object versions during the retention period.*

☐ Compliance Retention (Compliance Mode)

*No users can overwrite or delete protected object versions during the retention period.*

### ◆ Flexible Retention (Governance Mode)

- Users with specific **IAM permissions** can **overwrite or delete** protected object versions during the retention period.  
👉 Best for organizations that need **flexibility** with authorized admin control.

### ◆ Compliance Retention (Compliance Mode)

- **No users can overwrite or delete** protected object versions during the retention period.  
👉 Best for use cases requiring **strict compliance** with regulations (e.g., finance, healthcare, government).



# Cyber Resilient Storage – Guarding Against Ransomware

## Immutable Snapshot Schedule Frequency

☒ Daily

Snapshot Time

00

:

00

Retention Period in Days

7

☒ Weekly

Run Schedule Day

Friday

Snapshot Time

00

:

00

Retention Period in Weeks

5

☒ Monthly

Start Day/Week

Day

1

Snapshot Time

00

:




00

Retention Period in Months

12



# Cyber Resilient Storage – Guarding Against Ransomware

Name		Status	Plan Count	Immutable Snapshots	Stored Data	Deduplication	Compression	Overall Data Reduction	Space Occupied
	ArcserveDemo								
	arccloud	✓	2	1	234.03 GB	43%	20%	54%	106.53 GB
	RPS01	✓	1	N/A	12.61 GB	6%	26%	30%	8.8 GB

### Immutable Snapshots

Source Data Store arccloud

Snapshots Created	Adhoc Jobs	Daily Jobs	Weekly Jobs	Monthly Jobs
2	2	0	0	0

Select Immutable Snapshot to Restore from

All Immutable Snapshots(2)Sort Newest to Oldest

Snapshot (9/23/2025 1:09:19 PM) 106.63 GB   Expires in 365 day(s)	<a href="#">View Logs</a>
Snapshot (9/15/2025 3:44:41 PM) 67.97 GB   Expires in 2 day(s)	<a href="#">View Logs</a>



# Cyber Resilient Storage – Guarding Against Ransomware

Source Data Store	arccloud
Immutable Snapshot	Snapshot (2025-09-23 13-09-19)
Recovery Point Server	ArcserveDemo
Cloud Account	arccloud
Bucket Name	arccloud
Data Store Name	arccloud2025-09-23 13-09-19
Data Store Folder	X:\Test CRS\Common
Index Destination	X:\Test CRS\Data
Data Store Mode	Read-Only Data Store - intended to use data from previous backups ⓘ
Automatic unmount	3 days
Encryption Password	

» ArcserveDemo > arccloud2025-09-23 13-09...

⚙ Configuration Wizard

✓ **Status**

✓ Running    👁 Read-Only

This is a read-only datastore that will expire on 9/26/2025 1:51:18 PM

**Primary Storage**

Data Destination    9998.9 TB free of 9999 TB

**Metadata Storage**

Backup Destination    5.1 TB free of 5.2 TB

Index Destination    5.1 TB free of 5.2 TB



# Cyber Resilient Storage – Guarding Against Ransomware

<Local Site> Destination: ArcserveDemo > arccloud2025-09-23 13-09-19

## Recovery Points

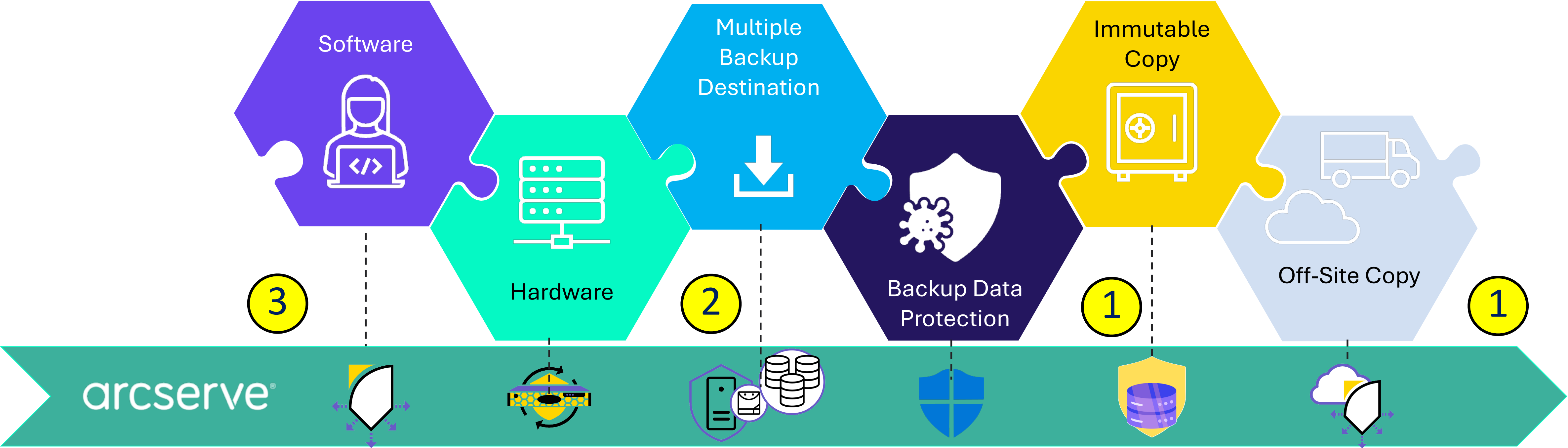
### Summary

Actions ▾		
Node name	Most Recent Recovery Point	Recovery Point Count
Plan:(Not Protected)		17
<u>ArcserveDemo</u>		9
<u>CRS 1.0.54@172.16.1.25</u>		8

[Refresh](#)  
[Restore](#)  
[Create an Instant VM](#)  
[Create a standby VM](#)  
[Run Assured Security Scan Now](#)  
[Delete](#)



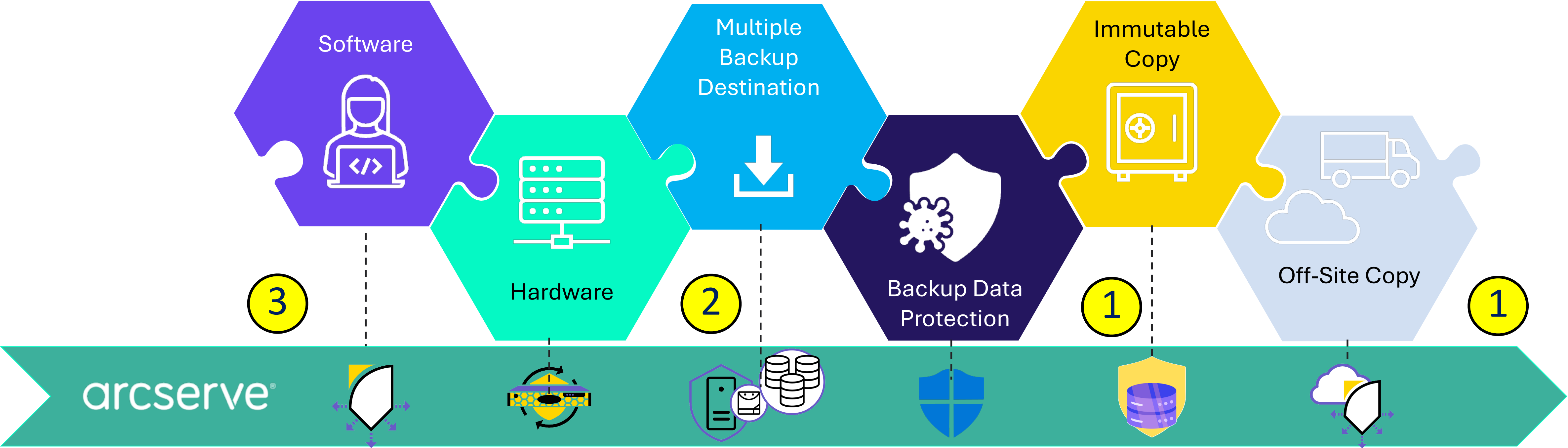
# Arcserve: TRUE End to End Solution



Guaranteed Access to Data for Recovery From Ransomware



# Arcserve: TRUE End Solution



Guaranteed Access to Data for Recovery From Ransomware



arcserve®

**Q&A**



arcserve®

**Thank you**